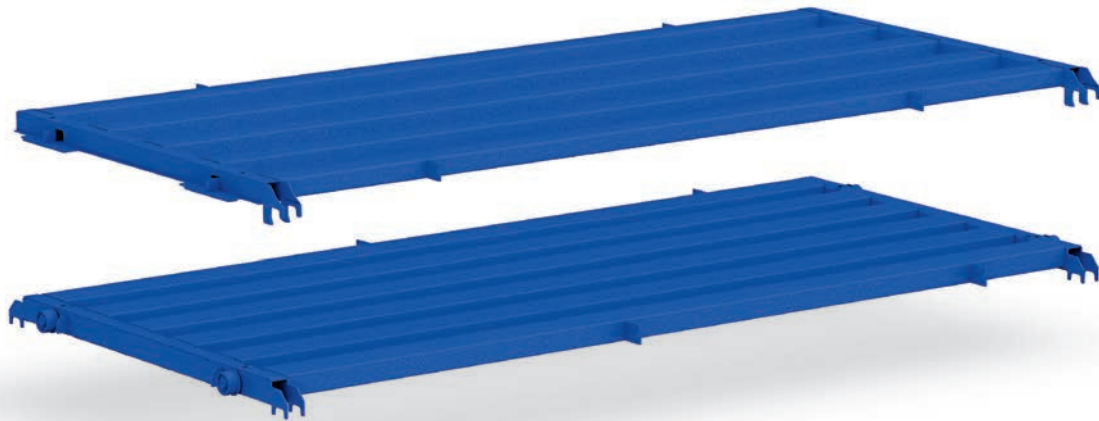


SYSTEM PALLET

The perfect carrier medium for raw sheets, finished parts, and other goods



STOPA's SYSTEM PALLETS are the solution for storing raw sheets, finished parts, and other goods. They are available for all standard sheet formats and designed for payloads up to 5 tons.

The first-class construction and optimal material selection enable almost wear-free and noiseless operation. Optionally, the SYSTEM PALLETS can be equipped with stops that facilitate loading and serve as slip protection. For space-saving handling of Euro pallets, there are the load carriers EPAL CARRIER.

Versions

- ▣ with rollers
- ▣ with slide rails
- ▣ with support angles for telescopic lifting
- ▣ as EPAL CARRIER for space-saving accommodation of Euro pallets

BENEFITS AT A GLANCE →

- ▣ Available for all standard sheet formats.
- ▣ Payload up to 5 tons.
- ▣ Compatible with all stations for sheet metal storage.
- ▣ Protection against slipping through optional pallet stops or rubber pads.
- ▣ Expandable with various floor plates.