

A close-up, low-angle shot of blue industrial machinery, likely a conveyor system or automated storage system. The image shows several parallel blue metal tracks or rollers, with some blurred lights in the background. In the top right corner, there is a white rounded rectangle containing the word "STOPA" in bold, black, uppercase letters.

STOPA

AUTOMATED **STORAGE SYSTEMS**

FOR SHEET METAL, LONG-SPAN AND OTHER GOODS

AUTOMATE **OPTIMIZE** **BENEFIT**

Elevate your storage to a higher level of efficiency – with the knowledge of STOPA. We are one of the leading global providers of automated storage systems. With an extensive product range, we offer future-proof solutions with intelligent warehouse management software and simple controls: for maximum efficiency and profitability. From stand-alone storage to fully automated large-scale storage and logistics centers as the backbone of your production.

Whatever your requirements, you will find the best solution individually tailored to your needs with us!



Standard meets individuality

STOPA storage systems are predominantly modular and expandable. This allows for individual adjustments to nearly any situation. As a rule, our systems can also be seamlessly integrated into existing storage concepts. This guarantees the highest level of planning security and flexibility for the future.

World-class in automation

With the experience of over 2,500 installed systems worldwide, STOPA offers automation and process reliability based on proven knowledge and innovative software, with many options for connecting to processing machines and systems.

Always reachable

With STOPA, you have a reliable partner at your side. Our experts support you in every phase: from needs analysis with best practice recommendations to production support to preventive maintenance and modernization. Your satisfaction and security are our top priority.

CONTENT

STOPA

SHEET METAL STORAGE

- 6 STOPA ECO PLUS
- 8 STOPA MONO
- 10 STOPA FLEX
- 12 STOPA COMPACT
- 14 STOPA UNIVERSAL

LONG-SPAN STORAGE

- 18 STOPA LG-E
- 20 STOPA LG-T
- 22 STOPA LG-B
- 24 STOPA LG-U

EQUIPMENT

- 28 CONNECTION OPTIONS

LOAD CARRIERS

- 30 SYSTEM PALLETT
- 31 BASE PLATES
- 32 EPAL CARRIER
- 33 SYSTEM CASSETTES

STORAGE AND RETRIEVAL STATIONS

- 34 INPUT PEDESTAL
- 35 COMPACT TURNER
- 36 TRANSPORT CART for sheet metal
- 37 SCISSORS LIFT CART
- 38 INCOMING GOODS STATION
- 39 WIRERLESS CART
- 40 DOUBLE CART
- 41 TRANSPORT CART for long-span goods
- 42 TILT AND LIFTING DEVICE

PROCESS OPTIMIZATION

- 44 UNPACKING TABLE
- 45 PEDASTEL
- 46 QUICK CHANGER
- 47 BUFFER STATION
- 48 PICKING TOWER
- 49 PARTS TURNING STATION

WMS

- 52 WAREHOUSE MANAGEMENT SYSTEM

SERVICE

- 56 SERVICE AGREEMENT BASIC
- 57 SERVICE AGREEMENT CLASSIC
- 58 SPARE PARTS SERVICE
- 59 SECURITY CHECK

- 60 RETROFIT

STOPA ANLAGENBAU GMBH
Industriestr. 12
D-77855 Achern-Gamshurst
+49 7841 704-0
info@stopa.com
www.stopa.com



SHEET METAL STORAGE

STOPA's sheet metal storage systems stand for innovation and highest efficiency in warehouse and production logistics. They optimize the available space through their compact design, maximize your storage capacities, and ensure fast and precise material provisioning.

Intelligent automation significantly simplifies and accelerates your warehouse management. The high precision and reliability of the storage systems ensure minimal error rates and continuous availability. All STOPA sheet metal storage systems, from the tower storage to the large-scale storage system, are designed to perfectly adapt to the respective requirements and spatial conditions and can be integrated into existing production systems.

STOPA ECO PLUS

Modular, flexible, and expandable



Create space in your warehouse and boost your productivity. The innovative storage system STOPA ECO PLUS offers you a cost-effective entry into automated storage management and can be expanded as needed. Differently selectable loading heights allow for a division tailored to your requirements – for maximum storage capacities.

This flexible system in a compact design offers you versatile possibilities and makes STOPA ECO PLUS, for example, the perfect buffer storage for your operation, as a single-tower or double-tower storage, and easily masters any challenge. With the optional automatic control as an alternative to manual operation, you simplify the handling of the SYSTEM PALLETS. Discover the cost-effective solution for large and maxi format sheets.

BENEFITS AT A GLANCE →

- ▮ Intelligent modular design in single-tower or double-tower version.
- ▮ Extra-fast turnover speeds.
- ▮ Safe handling using pulling and sliding technology on glide rails.
- ▮ Simple control via STOPA control module with an intuitive touchscreen interface.
- ▮ WAREHOUSE MANAGEMENT SOFTWARE (WMS-Essential) included as standard.
- ▮ Optionally combinable with chain conveyors, transport carts, or input pedestal.

PRODUCT HIGHLIGHTS AND OPTIONS →

From one to two

In just a few steps from single-tower to double-tower storage. This way, you double your storage capacities.

High operating comfort

WMS-Essential enables simple inventory management. Expandable with WMS-Tower 4.0 if needed.

Automated storage and retrieval

With STOPA ECO PLUS, the storage of sheets and similar goods can be automated. This not only increases the efficiency and quality of your storage management but also reduces costs.



TECHNICAL DATA STOPA ECO PLUS →

Pallet Format	GF	XF
Dimensions L x W [mm]	3.048 x 1.524	4.064 x 2.032
Permissible load [kg]	1.500 / 3.000	3.000
Maximum system height [m]	7,95	maximum 7,95
Number of pallets single-tower version	maximum 49	maximum 39
Pallet Format GF/XF		
Standard loading heights [mm]	50 to 200	
Numbers of loading heights	maximum 3	
Lifting speed [m/min]	16	
Pulling speed [m/min]	12	

STOPA MONO

Tower storage for standard and special formats



Maximize your production area and make optimal use of every corner of your operation. With STOPA MONO, you can efficiently and economically store sheet formats up to 2,032 x 6,096 mm.

This system's compact design offers you versatile possibilities and makes STOPA MONO, for example, the perfect buffer storage for your operation. Benefit from different loading heights. This storage system easily masters any challenge. The path measurement system ensures the highest precision in the positioning of the pallets. With the optional automatic control as an alternative to manual operation, you simplify pallet handling. Discover the cost-effective solution for standard and special formats.

BENEFITS AT A GLANCE →

- ▮ Cost-effective tower storage system.
- ▮ Efficient storage of sheets and other goods.
- ▮ High storage density through different loading heights.
- ▮ Suitable also for heavy, oversized sheet packages and bulky goods.
- ▮ Fast pallet handling using pulling and sliding technology.
- ▮ Ergonomic height for loading and unloading at the storage and retrieval machine (SRM).
- ▮ Simple and intuitive control via STOPA control module in manual or automatic operation (optional).
- ▮ Connection to customer's ERP systems optionally possible.

PRODUCT HIGHLIGHTS AND OPTIONS →

Stores special formats and heavy loads

With STOPA Mono, you can store all common standard and special sheet formats compactly and safely.

Maximum load capacity

Heavy sheet packages? No problem! STOPA Mono stands for reliable stability. Each storage space can handle a payload of up to 5 tons.

Optimal space utilization

Due to its design, the storage system requires a minimum of floor space. For large storage capacities, STOPA Mono grows in height.

Clear inventory management

STOPA MONO is equipped with the WAREHOUSE MANAGEMENT SOFTWARE MVS-Tower 4.0 as standard. This ensures you always have a precise overview of your current inventory.



TECHNICAL DATA STOPA MONO →

Pallet Format	XF	XXF
Dimensions L x W [mm]	4.064 x 2.032	6.096 x 2.032
Permitted load [kg]	5.000	5.000
Maximum system height [m]	10	10

STOPA FLEX

High flexibility for efficient material flow

Optimize your workflow with STOPA FLEX, our flexible storage system for efficient material flow! Versatile connection options for stations create ideal conditions for perfecting your processes. Whether it's different sheet formats or other goods: this system offers high storage density with minimal space requirements. The space-saving tower design optimizes your space utilization and gains important production area.

The sturdy construction allows for the storage of even the heaviest loads. STOPA FLEX also enables fully automatic linking with downstream processing machines. As an option, we offer STOPA FLEX as a building-supporting system to spatially separate your inventory and production. Discover the future of process-optimized manufacturing! Depending on the need, long side and short side stations with SCISSORS LIFT CARTS and TRANSPORT CARTS, also in combination, are possible.

PRODUCT HIGHLIGHTS AND OPTIONS →

Easy machine connection

For process-optimized manufacturing, you can directly link STOPA FLEX fully automatically with processing machines.

Continuous inventory management

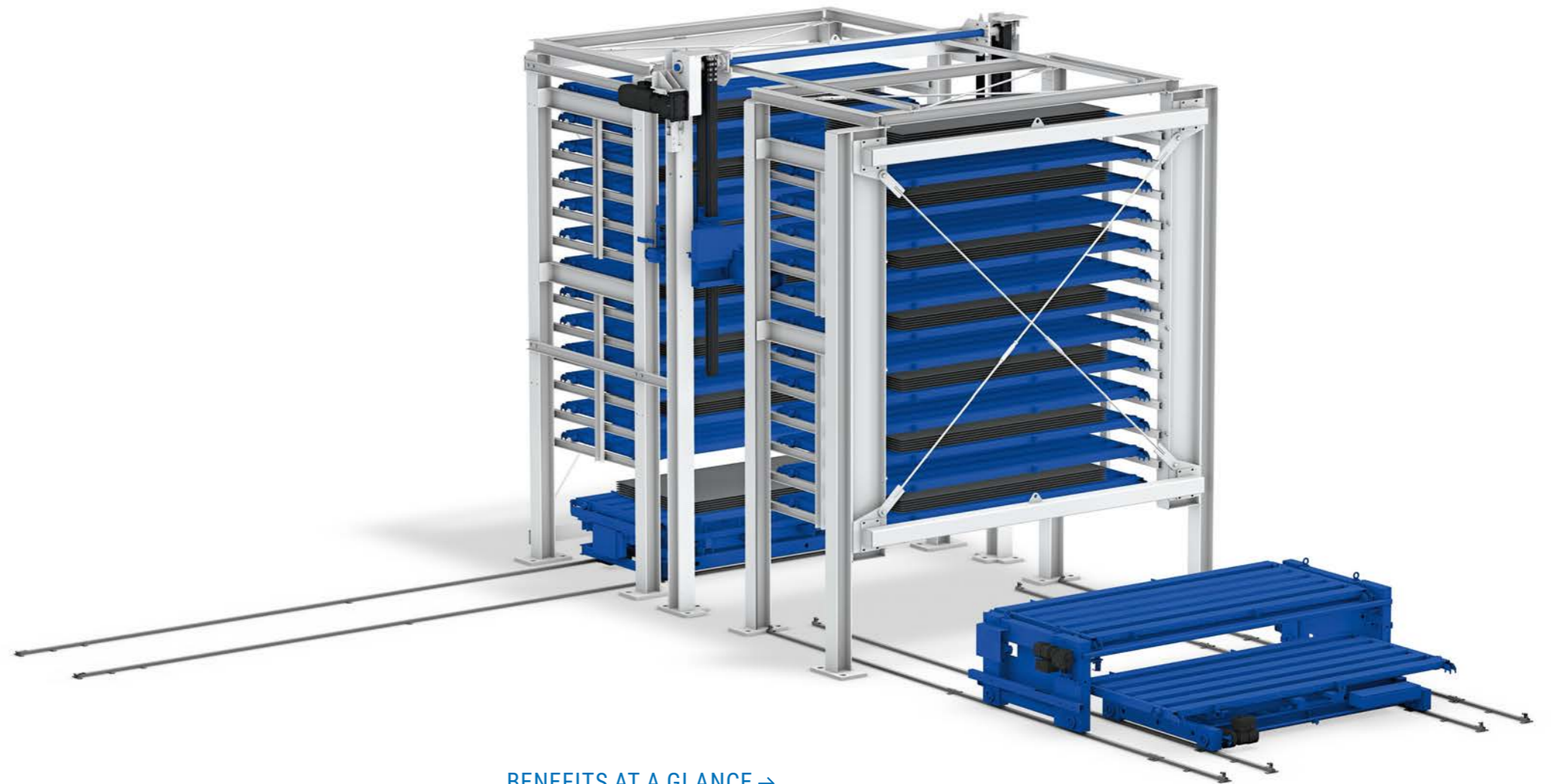
With the WAREHOUSE MANAGEMENT SOFTWARE WMS-Tower 4.0, you always have a precise overview of your inventory. Connection to higher-level control systems via an ERP interface is optionally available.

Modularly expandable

Whether as a single-tower or double-tower storage: STOPA FLEX enables 360° connection of stations for optimizing your workflow.

More space for your production

STOPA FLEX is also available as a Building-supporting construction version. With roof and wall elements, the storage system becomes its own structural unit, which can be directly connected to your existing buildings.



BENEFITS AT A GLANCE →

- ▮ Highly flexible storage system in tower construction for various sheet formats and other goods.
- ▮ Heavy loads are no problem thanks to the sturdy construction.
- ▮ Maximum storage capacities through different loading heights.
- ▮ Fully automatic linking with processing machines is optionally possible.
- ▮ Pulling and sliding technology ensures high packing density.
- ▮ 360° connection of stations possible: long side, short side or in combination.
- ▮ Simple and intuitive control.
- ▮ Connection to customer's ERP systems optionally available.
- ▮ Also available as a building-supporting version.

TECHNICAL DATA STOPA FLEX →

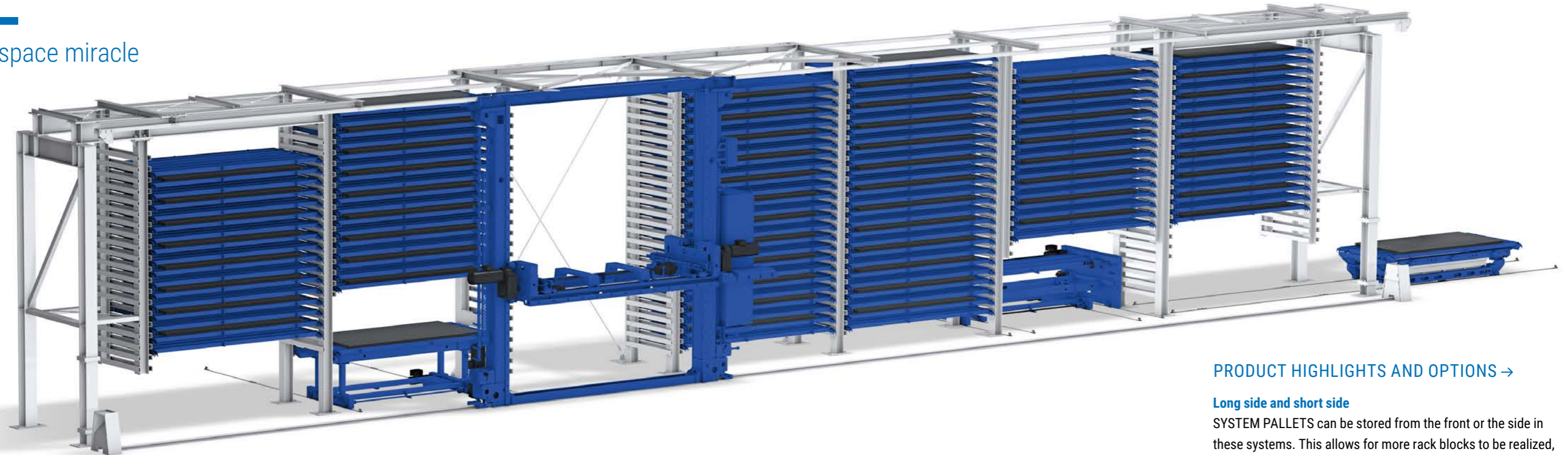
Pallet Format	MF	GF	XF
Dimensions L x W [mm]*	2.500 x 1.250	3.048 x 1.524	4.064 x 2.032
Payload per storage location [kg]	3.000	3.000	3.000 / 5.000
Maximum system height [m]	20	20	20
Maximum lifting speed [m/min]	30	30	30
Maximum pulling speed [m/min]	12	12	12
Building-supporting construction	optional	optional	optional

* Special format on request



STOPA COMPACT SERIES

The space miracle



STOPA COMPACT is the ideal solution for the highest demands of the industry. The fully automated large storage systems enable the most modern logistics and manufacturing processes because they perfectly adapt to any requirement and space situation.

As a central logistics hub, these systems offer storage and provision in perfection, utilizing saving potentials and reducing costs. The STOPA COMPACT large storage systems can be extended almost unlimitedly in length. Processing machines can be connected all around. Continuous inventory management ensures the highest efficiency.



ADVANTAGES AT A GLANCE →

- ▮ The space miracle: Enormous storage capacity in the smallest of spaces – horizontally extendable almost without limits.
- ▮ Ideal as a logistics center for synchronizing procurement, storage, and provisioning.
- ▮ Optimized storage density through space-saving pulling and pushing technology.
- ▮ The WAREHOUSE MANAGEMENT SOFTWARE allows for dynamic storage with different loading heights.
- ▮ 360° connection of stations possible: long side, short side or in combination.
- ▮ Fully automatic connection to processing machines.
- ▮ Comfortable control via STOPA operating module with intuitive touchscreen interface for fully automatic order processing.
- ▮ Automatic and continuous inventory control through STOPA WAREHOUSE MANAGEMENT SOFTWARE.
- ▮ WMS-Basic 4.0 for managing fixed storage locations, WMS-Dynamic 4.0 (optional) for dynamic warehouse management, variable loading heights, and automatic connection to processing machines.

ADVANTAGES OF STOPA COMPACT I →

- ▮ Storage of different sheet formats in one system possible.
- ▮ Cost-effective single or double-sided storage system with pulling and pushing technology.

ADVANTAGES OF STOPA COMPACT II →

- ▮ Up to 2 additional storage locations per rack block due to a more compact construction compared to COMPACT I.
- ▮ Shorter cycle times through innovative weighing device.
- ▮ Wear-free and quiet operation due to innovative construction.
- ▮ High energy efficiency through optimized energy consumption.

PRODUCT HIGHLIGHTS AND OPTIONS →

Long side and short side

SYSTEM PALLETS can be stored from the front or the side in these systems. This allows for more rack blocks to be realized, and the overall storage capacity can be significantly increased.

Save room and floor costs

STOPA COMPACT frees up production areas that would otherwise be wasted. Optionally, more production area can be gained through a building-supporting construction.

Connection to processing machines

For fully automatic handling and quick order picking, processing machines can be connected from the long, short or both sides to STOPA COMPACT.

Efficiency increase through dynamic storage

With the intelligent WAREHOUSE MANAGEMENT SOFTWARE WMS-Dynamic 4.0, STOPA optimizes the management of storage locations. This allows for quick and direct storage of sheets and other goods by targeting the nearest available storage location.

TECHNICAL DATA →

	STOPA COMPACT I			STOPA COMPACT II
Pallet Format	MF	GF	XF	GF
Dimensions L × W [mm]*	2.500 × 1.250	3.048 × 1.524	4.064 × 2.032	3.048 × 1.524
Permitted load [kg]	3.000	3.000	3.000 / 5.000	3.000
Maximum system height [m]**	20	20	20	20
Maximum lifting speed [m/min]	30	30	30	30
Maximum pulling speed [m/min]	20	20	20	20
Travel speed [m/min]	100/150/200	100/150/200	100/150/200	100/150/200

* Special format on request **Special height on request

STOPA UNIVERSAL

High flexibility, fast picking



Variable loading heights and the design for high payloads make this storage system the ideal solution for all requirements of the processing industry. With its modular construction, needs-based sizing, multiple expansion options, and the possibility of direct integration with processing machines, STOPA UNIVERSAL optimally adapts to your requirements.

The system combines large storage capacities with efficient space utilization. STOPA UNIVERSAL is available in single-row and double-row versions with heights of up to 25 meters. Gain production space by cost-effectively moving your storage inventory upwards or choosing a building-supporting version.



BENEFITS AT A GLANCE →

- ▮ Individually configurable large-scale storage at an attractive price-performance ratio.
- ▮ The perfect interface for material storage and provision for processing.
- ▮ Low space requirement – storage areas grow upwards.
- ▮ Automatic connection to processing machines possible.
- ▮ 360° connection of stations possible: long side, short side or in combination.
- ▮ Automatic and continuous inventory control through STOPA WAREHOUSE MANAGEMENT software.
- ▮ WMS-Basic 4.0 for managing fixed storage locations. Optionally: WMS-Dynamic 4.0 for dynamic storage management, variable loading heights, and automatic connection to processing machines.
- ▮ Optionally available as a building-supporting version.

PRODUCT HIGHLIGHTS AND OPTIONS →

Connection to processing machines

For fast commissioning of orders, STOPA UNIVERSAL can be variably connected to processing machines.

Simple and clear control

The STOPA control panel with an intuitive touchscreen interface enables fully automated order processing.


Efficiency increase through dynamic storage management

With the intelligent WAREHOUSE MANAGEMENT SOFTWARE WMS-Dynamic 4.0, STOPA optimizes the management of storage locations. This enables quick and direct storage of sheets and other goods by specifically targeting the nearest storage location.

TECHNICAL DATA STOPA UNIVERSAL →

Pallet Format	MF	GF	XF
Dimensions L x B [mm]*	2.500 x 1.250	3.048 x 1.524	4.064 x 2.032
Permitted load [kg]	3.000	3.000	3.000 / 5.000
Maximum system height [m]**	20	20	20
Maximum lifting speed [m / min]	30	30	30
Maximum pulling speed [m/min]	25	25	25
Travel speed [m/min]	100/150/200	100/150/200	100/150/200

* Special format on request **Special height on request



LONG-SPAN STORAGE SYSTEM

Safe storage and retrieval as well as high turnover speeds make STOPA's long goods storage systems unbeatable solutions for the efficient storage of long goods and similar items. STOPA's long goods storage systems offer optimized space utilization, enable fast, automated material provisioning, and are also available as building-supporting versions. Thanks to their intelligent construction and automation technology, they ensure safe and efficient handling of storage materials and minimize the risk of damage and accidents. The range of STOPA long goods storage systems extends from individual tower storage to complex large-scale long goods storage systems with up to 1,000 storage locations.

STOPA LG-E

Simple – fast – reliable



Boost your storage efficiency. STOPA LG-E is the cost-effective entry-level solution for the automated storage of long goods and similar items! Benefit from high flexibility and adjust your storage to meet your requirements as needed.

With STOPA LG-E, you are always prepared for increasing storage demands. Expand the tower storage from a single-tower to a double-tower system. Seamlessly integrate STOPA LG-E with ERP systems, benefit from our WAREHOUSE MANAGEMENT SOFTWARE, and optimize your process flows.

BENEFITS AT A GLANCE →

- ▮ Economical storage system for the efficient stocking of long goods, such as bars, tubes, profiles, angles, and much more.
- ▮ Perfect overview of inventory levels.
- ▮ Rapid turnover speeds.
- ▮ Safe handling with pull and push technology on glide rails.
- ▮ Simple control via the STOPA control module with an intuitive touchscreen interface.
- ▮ Comfortable inventory management with WMS-Essential (standard), optionally expandable with WMS-Tower 4.0.
- ▮ Connection to customer-side ERP systems optionally available.

PRODUCT HIGHLIGHTS AND OPTIONS →

From one to two

Double your storage capacities. In just a few steps, go from a single-tower to a double-tower storage system.

Storage and retrieval

STOPA LG-E perfectly realizes the storage of long goods. Increased efficiency and quality of your storage management reduces space and costs.

Individually divisible cassettes

STOPA long-span goods cassettes are characterized by high rigidity. If needed, they can be individually divided into compartments. Bottom strips and side styles simplify loading and unloading, for example, when using slip bands.

High operating comfort

Our WAREHOUSE MANAGEMENT SOFTWARE WMS-Essential enables easy inventory management. If needed, it can be expanded with WMS-Tower 4.0 at any time.



TECHNICAL DATA STOPA LG-E →

Cassette format L x W [mm]	6.500 x 840
Payload per storage location [kg]	1.500 und 3.000
Maximum system height [m]	7,95
Loading heights [mm]	155 bis 500
Lifting speed [m/min]	16
Pulling speed [m/min]	12

STOPA LG-T

Optimized space utilization for efficient storage



Maximize your productivity with the high storage capacity and minimal space requirements of STOPA LG-T. Explore its versatility and multi-flexible station connectivity options.

The robust construction supports loads up to 4 tons, and you can seamlessly connect multiple machining centers to the storage system automatically.

Opt for efficiency, flexibility, and the exceptional quality of our storage systems to step into the process-optimized future of your warehousing today!

BENEFITS AT A GLANCE →

- ▮ Flexible tower storage system.
- ▮ Rapid turnover speeds.
- ▮ Self-supporting cassettes with high rigidity for heavy loads, individually divisible into compartments.
- ▮ 360° station connectivity possible: long side, short side or in combination.
- ▮ Optional fully automated linkage with machining centers.
- ▮ Simple material handling through transport carts with lifting devices (optional).
- ▮ Easy and intuitive control.
- ▮ Comfortable inventory management with WAREHOUSE MANAGEMENT SYSTEM WMS-Tower 4.0.
- ▮ Optional connection to client-side ERP systems.

PRODUCT HIGHLIGHTS AND OPTIONS →

Designed for all lengths

With STOPA LG-T, store long-span goods up to a length of 9,500 mm efficiently and securely.

Adjustable cassettes for versatile storage

STOPA's cassettes are highly rigid, offering the option to divide them into individual compartments for simplified loading and unloading through integrated floor strips and side styles.

Maximum space utilization

Thanks to its compact design, STOPA LG-T requires minimal floor space. For maximum storage capacity, the system can grow up to 20 meters high.

Automated connection to production machines

Realize process-optimized manufacturing by directly connecting the storage system to your production machines fully automatically (optional).

TECHNICAL DATA STOPA LG-T →

Cassette length usable [mm]*	3.000 – 9.500
Cassette width [mm]**	440/560/680/840
Payload per storage location [kg]	1.500/3.000/5.000
Maximum system height [m]***	20
Maximum lifting speed [m/min]	30
Maximum pulling speed [m/min]	12

* Special length on request ** Special width on request *** Special height on request

STOPA LG-B

The high-performance storage solution for highly efficient space use



Maximize storage capacities for efficient processes! Gain new production areas through optimized space utilization.

With STOPA LG-B, up to 1,000 SYSTEM CASSETTES can be arranged in a space-saving manner, as the storage and retrieval machine (SRM) operates above the storage area, eliminating the need for an aisle. The storage system also allows for a high degree of automation, as it can be fully automatically connected to one or more processing machines.

STOPA LG-B is also optionally available as a building-supporting version. This gives you the opportunity to create space for additional production areas by moving material storage outside, without being limited in handling. Choose STOPA LG-B: The automated storage system for the highest demands in stockpiling.

BENEFITS AT A GLANCE →

- ▮ Impressive storage capacity due to compact construction.
- ▮ Efficient storage of long-span goods and other items through varying compartment heights.
- ▮ Always expandable for rapid increase in storage capacities.
- ▮ Innovative automation solutions for optimized workflows and the highest demands of the industry.
- ▮ 360° connection of stations possible: long side, short side or in combination.
- ▮ WMS-Basic 4.0 for the management of fixed storage spaces. Optionally: WMS-Dynamic 4.0 for dynamic storage management, variable loading heights, and automatic connection to processing machines.
- ▮ Connection to customer-specific ERP systems optionally possible.



PRODUCT HIGHLIGHTS AND OPTIONS →

Maximum storage capacity

The LG-B large storage system has space for up to 1,000 LONG SYSTEM CASSETTES, which can also be designed for high payloads.

Automated connection of processing machines

STOPA LG-B offers various possibilities for optimizing your production processes. Thus, the storage system can be directly connected to processing machines.

The universal storage solution for long-span goods

Efficient and secure storage of long-span goods and similar items up to a length of 9,000 mm.

More efficiency through flexible warehouse management

STOPA LG-B uses the intelligent WAREHOUSE MANAGEMENT SYSTEM WMS-Basic 4.0. To further optimize your storage and retrieval processes, you can optionally upgrade to WMS-Dynamic 4.0. This, for example, automatically targets the nearest available storage space.

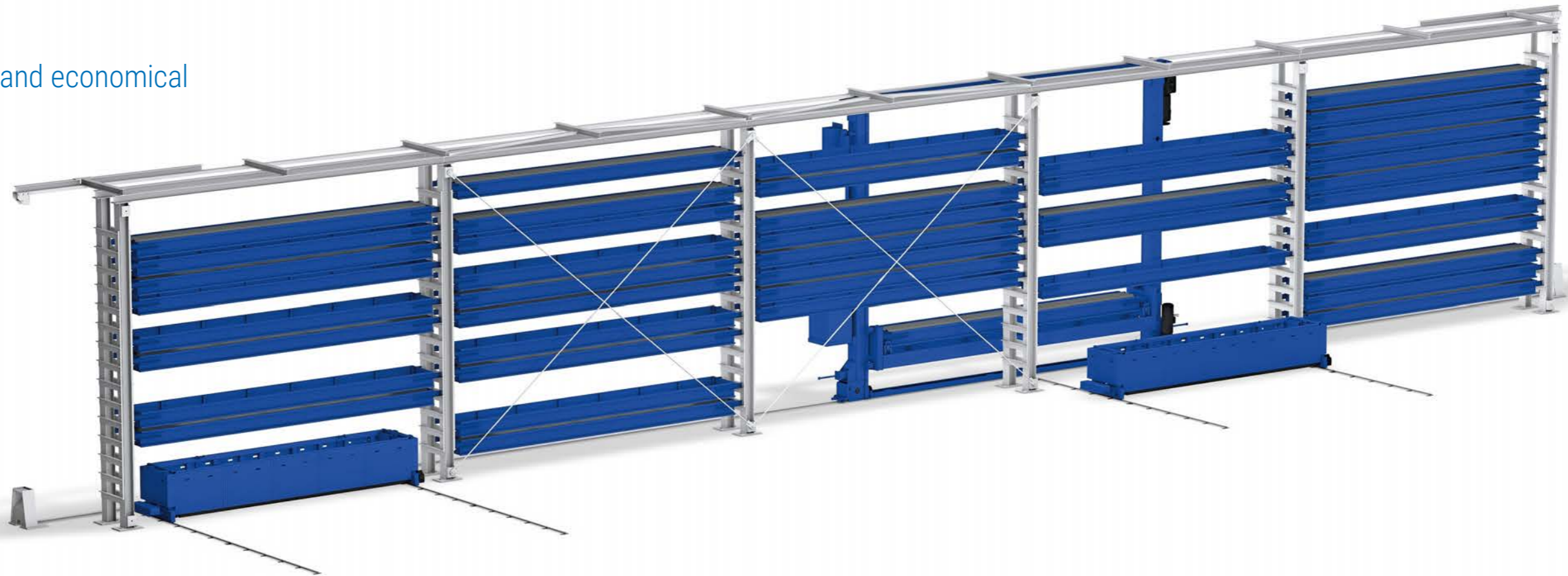
TECHNICAL DATA STOPA LG-B →

Cassette length usable [mm]*	3.000 – 9.500
Cassette width [mm]**	440/560/680/840
Payload per storage location [kg]	1.500/3.000/5.000
Maximum system height [m]***	20
Maximum lifting speed [m/min]	30
Maximum pulling speed [m/min]	25
Travel speed [m/min]	100/150/200

* Special length on request ** Special width on request *** Special height on request

STOPA LG-U

Space-saving, efficient, and economical



Improve your internal logistics chain and accelerate your processes. Thanks to our innovative WAREHOUSE MANAGEMENT SYSTEM and a high degree of automation, STOPA LG-U can significantly enhance the efficiency of your storage management.

For optimized material flow, a variety of stations are available to you. Handling is performed by a longitudinally movable storage and retrieval machine (SRM) equipped with telescopic forks that can extend on both sides. Processing machines can be directly connected to the storage system. The slim construction allows for optimal space utilization and maximum storage capacities, even with narrow floor plans. You can also gain new production areas by simply moving the storage system outside without being limited in handling. Because STOPA LG-U is also available as a building-supporting construction.



BENEFITS AT A GLANCE →

- ▮ Modular large storage for the economical storage of long goods and similar items – even with narrow floor areas.
- ▮ Stable construction for the safe storage of long goods.
- ▮ Always expandable for rapid increase in storage capacities.
- ▮ 360° connection of stations possible: long side, short side or in combination.
- ▮ WMS-Basic 4.0 for the management of fixed storage spaces. Optionally: WMS-Dynamic 4.0 for dynamic storage management, variable loading heights, and automatic connection to processing machines.
- ▮ Connection to customer-specific ERP systems optionally possible.
- ▮ Also available as a building-supporting version.

PRODUCT HIGHLIGHTS AND OPTIONS →

Quick access to stored goods

Handling is performed by a storage and retrieval machine (SRM) that can be moved lengthways and can store and retrieve on both sides. The use of two storage and retrieval machines is also possible for growing requirements.

Gaining space through building-supporting construction

As a building-supporting version with roof and wall elements, STOPA LG-U becomes its own structural unit that can be directly connected to your existing buildings to free up storage areas for important production spaces.

Automated connection of processing machines

You can optimize the material flow and your production processes by directly linking the storage system with your processing machines.

More efficiency through flexible storage management

STOPA LG-U utilizes the intelligent WAREHOUSE MANAGEMENT SYSTEM WMS-Dynamic 4.0 to optimize the management of free spaces. This allows for quick and direct storage of long-span goods and other items, as the nearest available storage space is automatically targeted.

TECHNICAL DATA STOPA LG-U →

Cassette length usable [mm]*	3.000 – 9.500
Cassette width [mm]**	840
Payload per storage location [kg]	1.500/3.000/5.000
Maximum System Height [m]***	20
Maximum Lifting Speed [m/min]	30
Maximum pulling Speed [m/min]	25
Travel speed [m/min]	100/150/200

* Special length on request **Special width on request ***Special height on request



EQUIPMENT

STOPA EQUIPMENT offers perfect solutions for a seamless storage and production chain! Whether it's load carriers, stations for storage and retrieval, process optimization, or warehouse management software: Our accessory components are perfectly tailored to your needs and enable highly efficient processes.

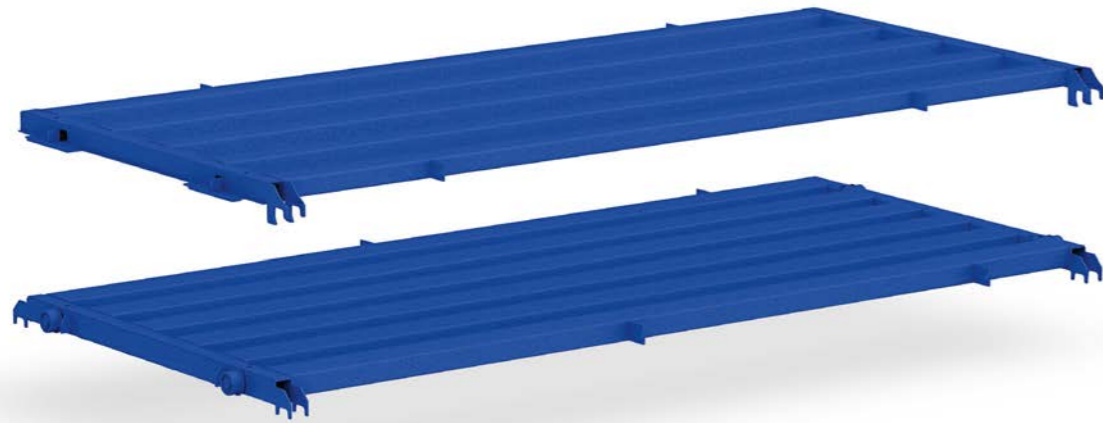
With STOPA equipment, you can expand your storage task-specifically, fully exploit the potential of your sheet metal or long goods storage system, and shorten cycle times. Whether it's accelerating the storage and retrieval of raw materials or providing materials and finished parts for fully automated processing machines or manual workstations – STOPA has the right solution for your requirements. Discover how STOPA can increase your productivity.

CONNECTION OPTIONS

	STOPA ECO PLUS	STOPA MONO	STOPA FLEX	STOPA COMPACT	STOPA UNIVERSAL	STOPA LG-E	STOPA LG-T	STOPA LG-B	STOPA LG-U
LOAD CARRIERS									
30 SYSTEM PALLETT	•	•	•	•	•				
31 BASE PLATES	•	•	•	•	•	•	•	•	•
32 EPAL CARRIER			•	•					
33 SYSTEM CASSETTE						•	•	•	•
STORAGE AND RETRIEVAL STATIONS									
34 INPUT PEDESTAL	•	•	•						
35 COMPACT TURNER				•					
36 TRANSPORT CART for sheet metal	•		•	•	•				
37 SCISSORS LIFT CART			•	•	•				
38 INCOMING GOODS STATION									
39 WIRERLESS CART			•	•	•		•	•	•
40 DOUBLE CART			•	•	•				
41 TRANSPORT CART for long-span goods						•	•	•	•
42 TILT AND LIFTING DEVICE							•	•	•
PROCESS OPTIMIZATION									
44 UNPACKING TABLE	•	•	•	•	•				
45 PEDASTEL			•	•	•				
46 QUICK CHANGER			•	•	•				
47 BUFFER STATION				•					
48 PICKING TOWER				•	•				
49 PARTS TURNING STATION				•					
LAGERVERWALTUNGSSOFTWARE									
52 WMS-Essential	•					•			
52 WMS-Tower 4.0	•	•	•	•	•	•	•		
53 WMS-Basic 4.0				•	•			•	•
53 WMS-Dynamic 4.0				•	•			•	•

SYSTEM PALLET

The perfect carrier medium for raw sheets, finished parts, and other goods



STOPA's SYSTEM PALLETS are the solution for storing raw sheets, finished parts, and other goods. They are available for all standard sheet formats and designed for payloads up to 5 tons.

The first-class construction and optimal material selection enable almost wear-free and noiseless operation. Optionally, the SYSTEM PALLETS can be equipped with stops that facilitate loading and serve as slip protection. For space-saving handling of Euro pallets, there are the load carriers EPAL CARRIER.

Versions

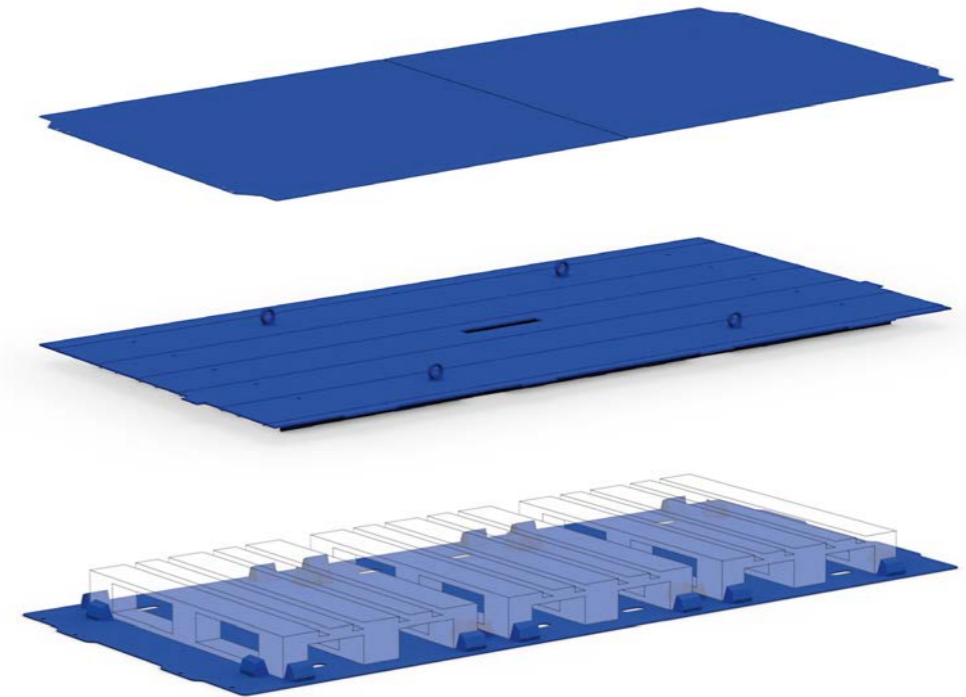
- ▮ with rollers
- ▮ with slide rails
- ▮ with support angles for telescopic lifting
- ▮ as EPAL CARRIER for space-saving accommodation of Euro pallets

BENEFITS AT A GLANCE →

- ▮ Available for all standard sheet formats.
- ▮ Payload up to 5 tons.
- ▮ Compatible with all stations for sheet metal storage.
- ▮ Protection against slipping through optional pallet stops or rubber pads.
- ▮ Expandable with various floor plates.

BASE PLATES

Store everything from small parts to Euro pallets: the complement to the system pallet



Gaps are no longer an issue. STOPA's FLOOR PLATES are the perfect complement to the SYSTEM PALLET. They enable safe and efficient storage of crates, Euro pallets, finished parts, and much more.

With the FLOOR PLATES, you can ensure that nothing falls through the gaps of the SYSTEM PALLETS and everything stays in place. The use of rubber pads makes them particularly valuable for storing sensitive materials.

Versions

- ▮ Standard floor plate
- ▮ Forklift-capable floor plates
- ▮ Floor plates for Euro pallets/mesh boxes

PRODUCT HIGHLIGHTS AND OPTIONS →

Secure storage

The use of floor plates allows for the safe storage of small parts.

Forklift-capable floor plates

Diese Bodenbleche besitzen an der Unterseite spezielle Aussparungen für die Entnahme mittels Gabelstapler.

Floor plates for Euro pallets/mesh boxes

For the storage of Euro pallets or mesh boxes, these floor plates are equipped with centering on the top. This ensures precise positioning and prevents slipping.

EPAL CARRIER

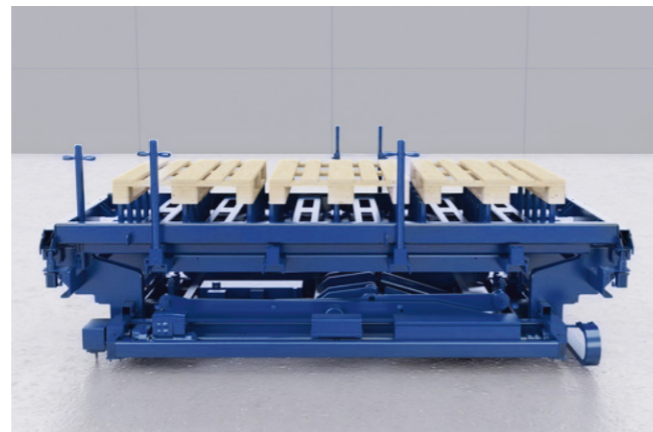
The key to efficient, space-saving, and secure storage of Euro pallets



Discover the smart way to store Euro pallets: with the EPAL CARRIER from STOPA. It is specifically designed to optimize the storage of sheets on Euro pallets (EPAL) and impresses with its space-saving features.

The intelligent design allows the Euro pallets to be sunk into the EPAL CARRIER and securely fixed, eliminating the risk of slipping.

The combined use of the EPAL CARRIER and transport carts with lifting function enables a fast storage and retrieval process.



BENEFITS AT A GLANCE →

- ▣ No additional storage space loss for empty Euro pallets.
- ▣ Increased storage capacity – approx. 50% more net loading height.
- ▣ Safe handling. No slipping of Euro pallets.
- ▣ Designed for Compact II.
- ▣ Can be combined with transport carts with lifting function.



LONG-SPAN CASSETTE

Partial compartments, bolts & more: the adaptable carrier medium for your long-span goods storage



STOPA's LONG-SPAN CASSETTES are the key to highly efficient storage of tubes, bar materials, profiles, and angles. With various designs, whether with rollers, glide rails, or support angles, they are suitable for all STOPA long-span goods storage systems. They possess high rigidity and are specifically optimized for storing tubes, bar materials, profiles, and angles.

But that's not all. STOPA's LONG-SPAN CASSETTES can also be equipped with base plates at the ends of the carriers. This allows for the secure storage of remnants and small parts. A particular highlight is the division into compartments. With the help of divider bolts, you can individually divide the space in a LONG-SPAN CASSETTE. Thanks to the insertable bolts, it's also possible to store several different materials separately in one system carrier. This not only maximizes space but also efficiency and overview.

Ausführungen

- ▣ with rollers
- ▣ with glide rails
- ▣ with support angles



BENEFITS AT A GLANCE →

- ▣ Efficient storage of bar materials up to a length of 9,000 mm.
- ▣ High-rigidity construction – available in various lengths, widths, and heights.
- ▣ Specialized storage options for remnants and small parts through welded-on floor plates at the ends.
- ▣ Flexible use of storage space through division into compartments.
- ▣ Insertable bolts for separating different materials.

INPUT PEDASTAL

Loading made easy



The **INPUT PEDASTAL** enables a precise and efficient loading process, as it ensures that no storage space is blocked.

1. The **INPUT PEDASTAL** enables a precise and efficient loading process, as it ensures that no storage space is blocked.
2. The sheet metal package is placed on an empty **SYSTEM PALLET** by crane/forklift.
3. The shelf traverse of the storage system moves down. The sheet metal package is now resting on the stamps that protrude beyond the **SYSTEM PALLET**.
4. The forklift or overhead crane lifts the sheet metal package and moves back slightly.
5. The shelf traverse moves up.
6. The sheet metal package is placed back on the stamps by forklift or overhead crane.
7. The shelf traverse moves up. The sheet metal package is now perfectly positioned on the **SYSTEM PALLET** and can be stored without damage.

To remove the packaging material and the wooden pallet, we recommend our **UNPACKING TABLE**.

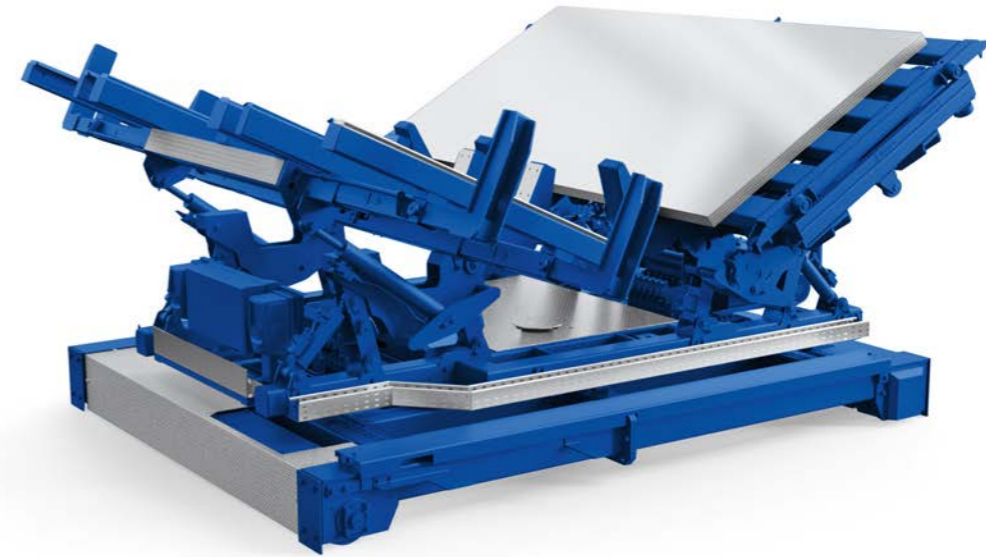
BENEFITS AT A GLANCE →

- Smart loading aid for the **STOPA ECO PLUS** and **STOPA MONO** storage systems.
- Maximum storage utilization and easy handling.
- Plastic stamps for safe, material-protecting loading.
- Ideal for all common sheet formats.



COMPACT TURNER

The innovative solution for the fully automated storage process of raw sheets



The **STOPA COMPACT TURNER** optimizes the goods receipt process by automating several steps together. The result: maximum efficiency and ease of use.

Every step, from unpacking to positioning and storage, is optimized and automated to save time and resources. Special focus is on the preservation of raw materials. The **COMPACT TURNER** is therefore equipped with innovative plastic pads that ensure a flat and safe material movement.

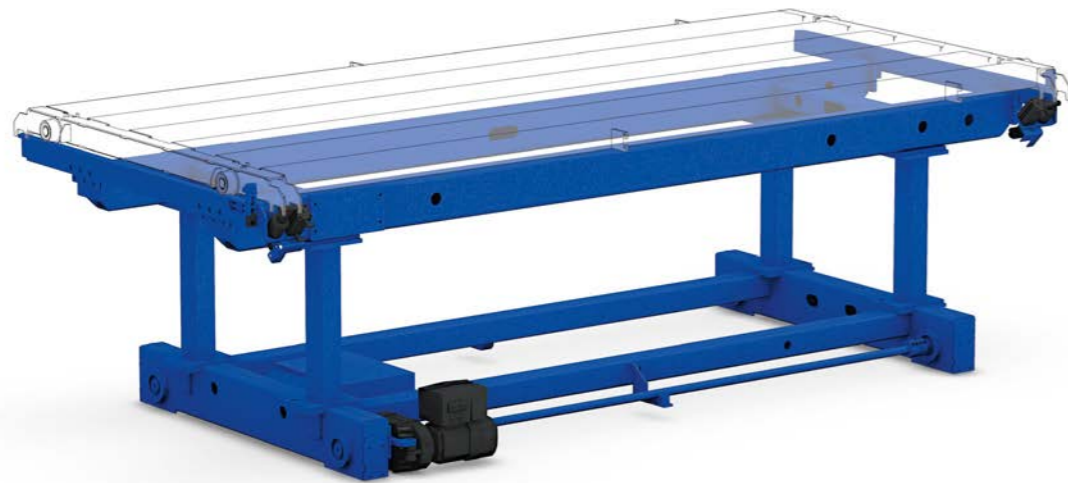
But that's not all: **COMPACT TURNER** offers you ultimate flexibility, as the 360° rotatable table is operable from all sides. This allows flexible approach positions with a forklift and maximizes ease of use.

BENEFITS AT A GLANCE →

- Time-saving automation for optimized storage processes.
- Gentle sheet handling through integrated plastic pads.
- Flexible approach positions thanks to 360° rotatable table.
- Easy to operate.

TRANSPORT CART for Sheet Metal Storage

Flexible material provisioning – perfect for automatic and manual removal processes



The TRANSPORT CART from STOPA is the convincing solution for efficient, safe, and flexible material provisioning at the machine or workplace.

From the basic version to functional extension options: This cart meets all your needs. It ensures effortless handling of STOPA SYSTEM PALLETS with raw sheets or other goods and is excellent for their provisioning, for example, at processing machines. Through a format adjustment, you can perfectly adapt the TRANSPORT CART for mixed storage to the respective pallet format. Control is optionally via manual operation or in automatic mode.

BENEFITS AT A GLANCE →

- ▮ Optimizes the workflow by quick provisioning of raw sheets and other goods.
- ▮ Suitable for all common sheet formats and for special formats.
- ▮ Available in various heights – matching every requirement.
- ▮ Long side and short side configurations possible.
- ▮ Safe operation: Manual or automatic mode.

The TRANSPORT CART is available in the following versions:

With rotation function

The rotation function allows precise alignment of the sheets, e.g., at the reference corner of the processing machine.

With spreading magnets

Spreading magnets ensure a smooth production process by securely separating sheets that stick together. Ideal for the provisioning and handling of oiled sheet packages.

With weighing station

Allows precise determination of the material weight on the system pallet. Ideal for inventory management.

SCISSORS LIFT CART

Precise provisioning at any height



The SCISSORS LIFT CART can provide system pallets with raw sheets or other goods at any required height.

For every requirement, there is a suitable SCISSORS LIFT CART: from the basic version to the wireless option. Thanks to its low construction height and intelligent lifting and lowering function, it is versatile and reduces space loss. Combining it with subsequent pedestals, a single SCISSORS LIFT CART can easily serve several work positions in a row.

BENEFITS AT A GLANCE →

- ▮ Variable in height: The ultimate solution for modern storage and production facilities.
- ▮ Suitable for all common sheet formats and special formats.
- ▮ Optimized space requirement due to low construction height and lifting/lowering function.
- ▮ Long side and short side configurations possible.
- ▮ Suitable for all SYSTEM PALLETS and EPAL CARRIERS.
- ▮ Operation of multiple positions possible (in combination with PEDESTALS).
- ▮ Can be combined with other products, such as the DOUBLE CART, the TANDEM CHANGER, or the QUICK CHANGER.

The SCISSORS LIFT CART is available in the following versions:

with rotation function

The rotation function allows precise alignment of the sheets, e.g., at the reference corner of the processing machine.

with storage pins

The fixed-height storage pins allow for the picking up of raw sheet packages with a forklift for optimized storage and retrieval.

with spread magnets

Spread magnets ensure a smooth production process by securely separating sheets (magnetic) that stick together. Ideal for provisioning and handling oiled sheet packages.

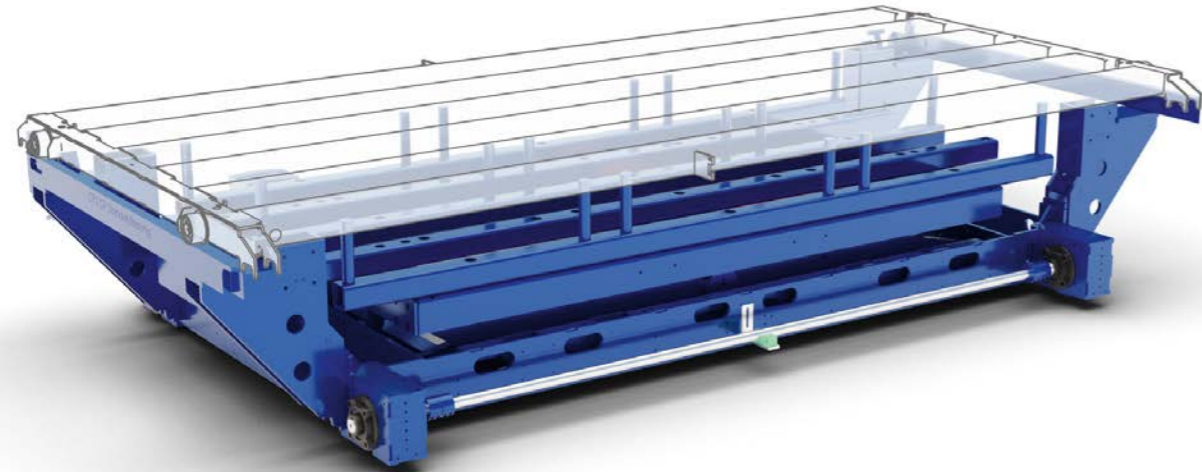
as wireless version

The battery-operated SCISSORS LIFT CART allows for longer transport distances without restrictions from long power cord systems.



INCOMING GOODS STATION

Efficient storing: fast, practical, versatile



STOPA's GOODS RECEIPT STATIONS are the solution for efficient and practical storing of sheet metal and other goods. These stations are equipped with hydraulically movable pins, optimizing the handling of STOPA SYSTEM PALLETS or EPAL CARRIERS, as sheet metal packages can be easily removed using a forklift.

Benefit from a secure positioning of sheets, as the optional automatic sheet alignment ensures precise positioning. Especially for mixed storage, the INCOMING GOODS STATION with format adjustment is available. Control can be manual or automated. Choose from the versions:

with fixed height

The INCOMING GOODS STATION is available in fixed heights and is therefore ideal for the storage process.

with dynamic height

This version allows for adaptation to different working conditions and can easily interact with PEDASTELES.

with rotation function

The rotation function allows precise alignment of the sheets, e.g., at the reference corner of the processing machine.

BENEFITS AT A GLANCE →

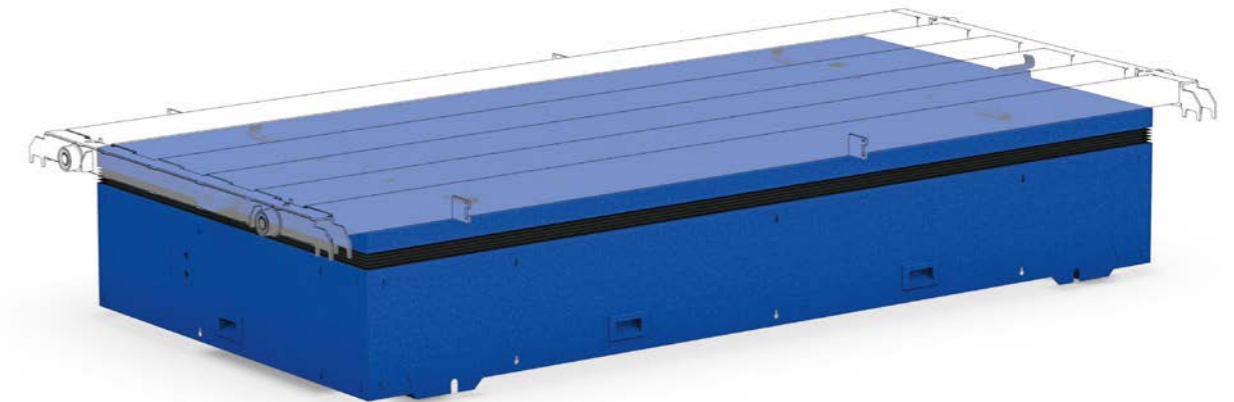
- Easy loading through hydraulically movable pins.
- Quick loading and unloading of Euro pallets on EPAL CARRIER.
- Automatic sheet alignment at the reference corner possible.
- Versatile handling options by combining loading and unloading functions.
- Compatible with pedestals for optimized storage and production processes.
- High load capacity up to 5 tons.
- Manually or fully automatically movable.
- Automatic sheet alignment at the reference corner possible.
- Format adjustment for different pallet sizes (optional).
- Also available in the WIRELESS CART version.



Scan the QR code and see the automatic sheet alignment in action!

WIRELESS CART

Battery-Powered freedom: for longer transport routes without obstacles



Transport smarter with STOPA's WIRELESS CART, the innovative alternative to traditional transport systems. Thanks to its advanced technology and a state-of-the-art lithium battery, you can say goodbye to obstructive cables.

When the battery is low, the WIRELESS CART autonomously returns to the charging station (automatic mode required). It bridges longer distances that would not be possible with standard transport systems and carries loads up to 5 tons.

The innovative STOPA WIRELESS CART with scissors lift function is available in various versions. It is compatible with all standard sheet metal formats and available in both long side and short side configurations.

Versions

- with pedestals
- as INCOMING GOODS STATION
- with rotation function

BENEFITS AT A GLANCE →

- Optimal mobility without restrictive power cable systems.
- Adaptable: Various heights possible through lifting and lowering function.
- Long side and short side configurations possible.
- Suitable for all standard sheet metal formats.
- Efficient operation: Ideal for longer transport routes without performance loss.

TECHNICAL DETAILS →

- Maximum Payload: 5.000 kg.
- Operating voltage: 24 V DC.
- Safe wireless control.
- Automatic battery management system.
- Adjustable travel speed.

DOUBLE CART

The duo for perfection: for quick, parallel loading and unloading of machines



Save time and increase your productivity. With the DOUBLE CART from STOPA, you can significantly optimize your processes. The DOUBLE CART consists of a lower and upper cart and allows you to load and unload machines in parallel.

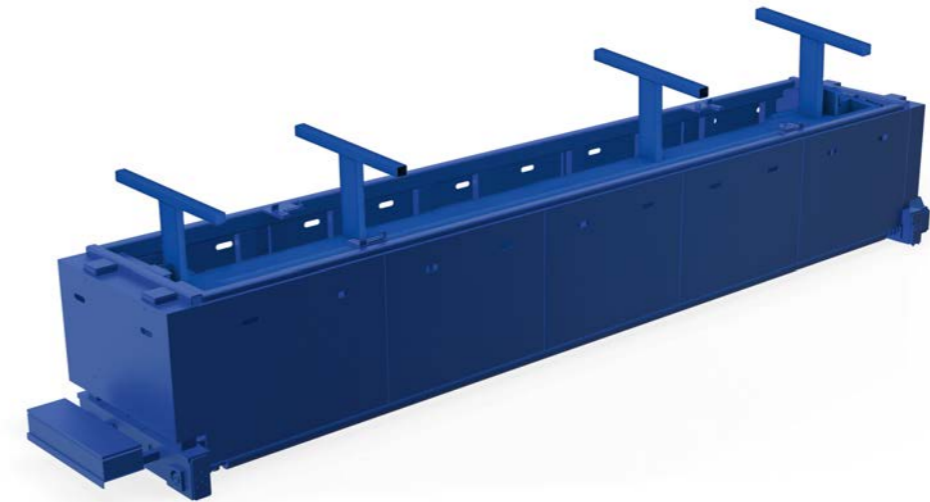
While the lower cart reliably supplies the machines with raw sheets, the upper cart can store parts after production without the need for a pallet change. This enables faster cycle times and more efficient use of the connected machine. In addition, the use of the STOPA DOUBLE CART can also efficiently optimize subsequent processes. It adapts to individual requirements, as it is available in various versions. Thus, the lower cart can be configured both as a TRANSPORT CART and as a SCISSORS LIFT CART. Both lower and upper carts are also available with special functions such as spread magnets.

BENEFITS AT A GLANCE →

- Two in one: The DOUBLE CART consists of a lower and an upper cart and allows almost simultaneous loading and unloading.
- Versatile versions: Customizable functions for specific needs possible.
- Fast cycle times: More efficient processes and optimized machine use.
- Compatibility: Available for all common sheet formats. Suitable for STOPA SYSTEM PALLETS and STOPA EPAL CARRIER.
- Long side and short side configurations possible.
- Compact design: Ideal for confined workspaces without loss of quality.
- Easy operation: Manual operation as well as automatic operation possible.

TRANSPORT CART for long-span goods

Quick and comfortable provisioning of long goods materials



Simpler handling, better ergonomics: All in one. The TRANSPORT CARTS from STOPA for LONG-SPAN CASSETTES offers you the solution for highly efficient warehouse management. Whether long side or short side loading and unloading, the TRANSPORT CART from STOPA can be perfectly adapted to your requirements.

With the optional lifting device, the loading and unloading of long goods materials become a simple and quick process. Bundled materials can easily be placed on the pins with a forklift. Lowering the pins safely deposits the material into the CASSETTE. Furthermore, the TRANSPORT CART can also be equipped with a weighing station, allowing for the precise verification of material weight both during storage and retrieval.

The TRANSPORT CART for long-span storage is available in the following versions:

as wireless cart

The battery-operated cart allows for longer transport distances without the constraints of long power cable systems.

with lifting device

Easy loading and unloading of long-span materials. Saves time and effort.

with weighing station

Enables precise determination of material weight during storage and retrieval.

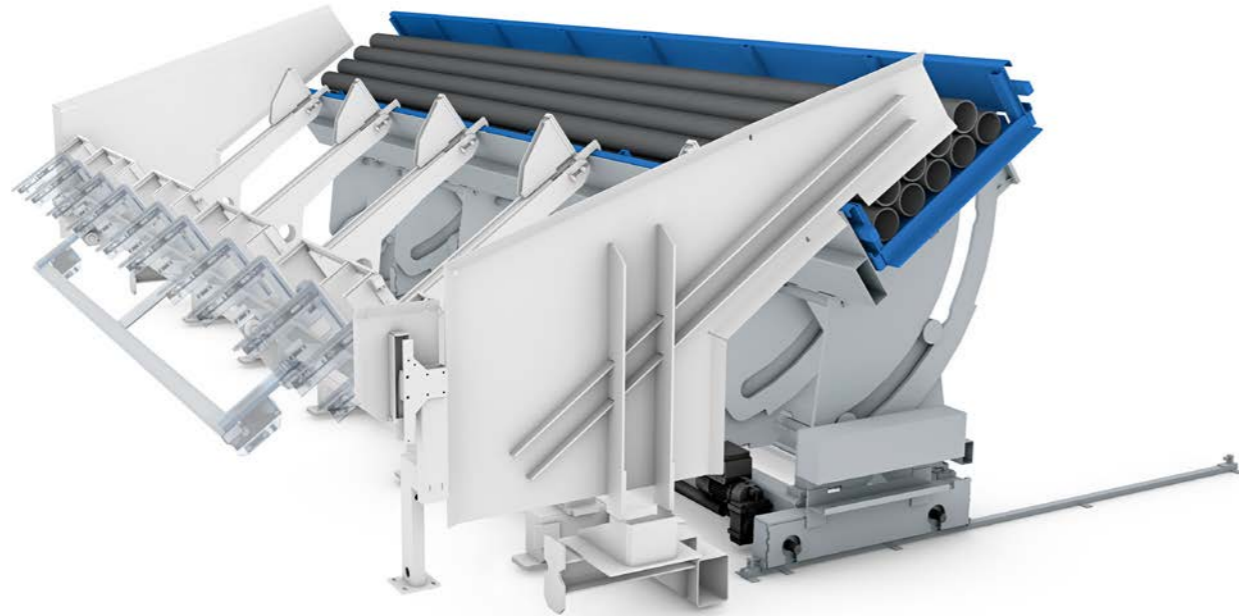
BENEFITS AT A GLANCE →

- Accelerates material flow through efficient loading and unloading.
- Available in various heights – suitable for every requirement.
- Long side and short side configurations possible.
- Safe operation: Manual operation or automatic operation.
- Semi-automated machine connection possible.



TILT AND LIFTING DEVICE

Optimized process flows through fully automated long-span singulation

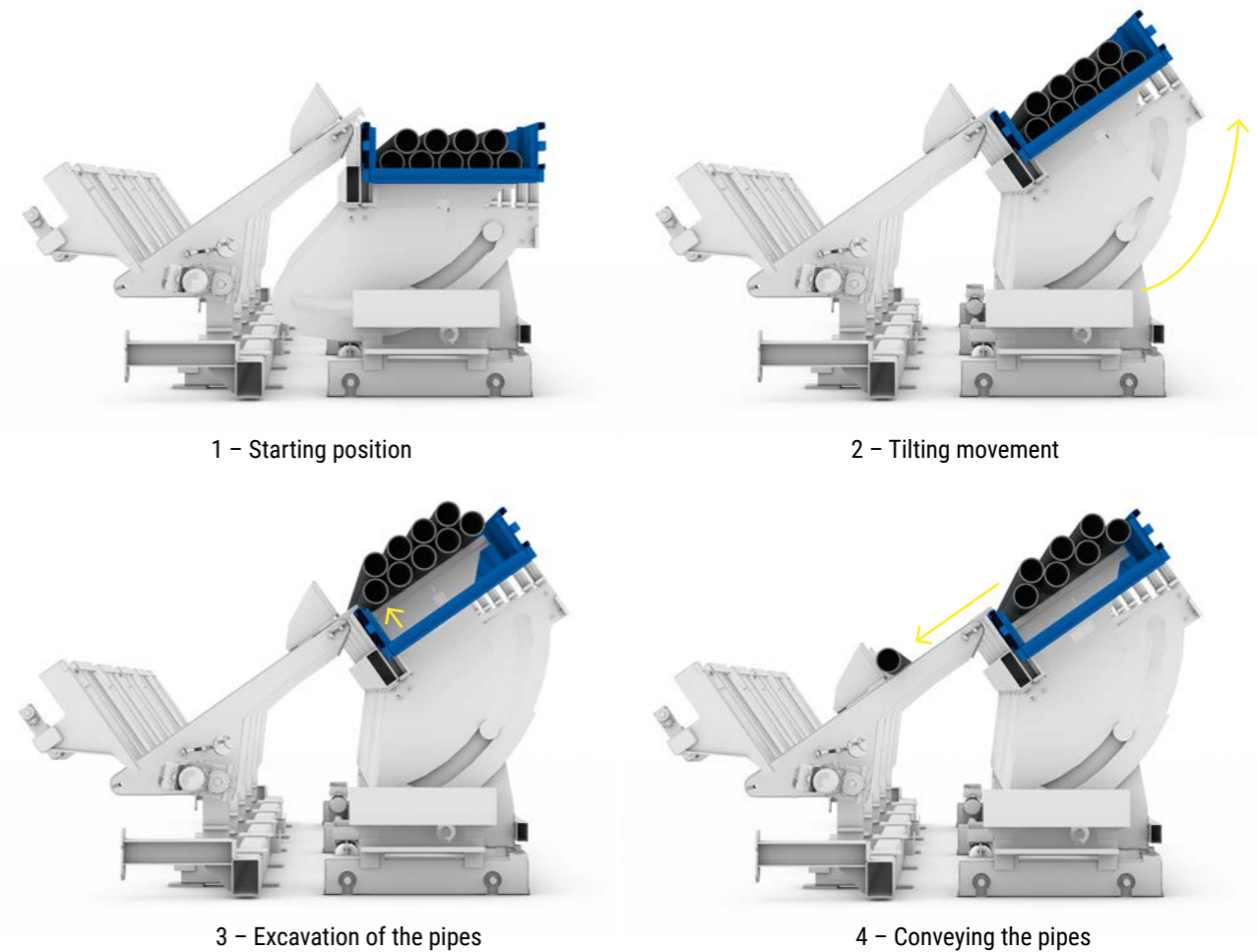


Fully automatic, precise, and efficient: The TILT AND LIFTING DEVICE from STOPA revolutionizes your production processes. This fully automatic solution singularizes long-span goods and seamlessly and automatically supplies subsequent processing machines.

Comprising a tilt and lift cart and a chain conveyor, the TILT AND LIFTING DEVICE spares you the manual loading of processing machines. Optimized for laser tube cutting machines, it quickly becomes an indispensable helper in your production line.

BENEFITS AT A GLANCE →

- ▮ Various versions: The TILT AND LIFTING DEVICE can process lengths from 6.4 m up to 8.05 m depending on the version. Individual profiles or bundles up to 9.2 m can be manually fed.
- ▮ Faster handling: Long-span materials can be transported from the storage position to the metal processing machine in under a minute.
- ▮ Large storage capacity: The bundle tray is designed for a high total load.
- ▮ Great adaptability: The TILT AND LIFTING DEVICE allows for optimal placement. It can be connected to processing machines both on the long and the short side.
- ▮ Various operating options: In addition to fully automatic operation, manual operation with swing-in conveyor sections for special profiles or individual profiles is possible (manual loading).
- ▮ Ideal for process optimization through optional connection to ERP systems.



How the TILT AND LIFTING DEVICE works

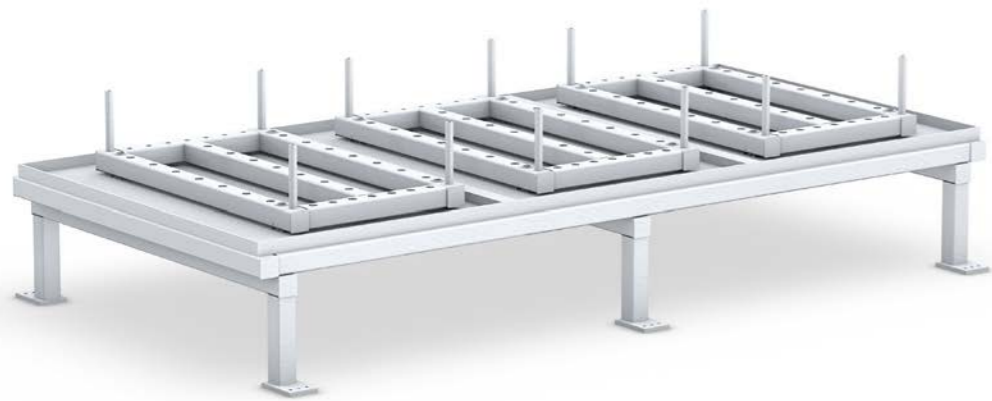
1. The tilting cart moves between the store and the chain conveyor.
2. The chain conveyor feeds the individual pipes to the separator fully automatically.
3. Special pipes or pipe bundles that are not stored in a cassette can also be fed manually as an option.

TECHNICAL DETAILS TILT AND LIFTING DEVICE →

Cassette length, inside (mm)	6.466	8.100
Loading height above cassette floor (mm)	300/375/450	300/375/450
Loading, up to 2/3 of the tube length (kg)	3.000	4.000
Conveyor weight – loaded / unloaded (kg)	2.000/5.000	2.000/5.000

UNPACKING TABLE

Efficient unpacking and depalletizing of sheet metal packages



STOPA understands what storage means. For this reason, the perfect UNPACKING TABLE has been developed to speed up the process of unpacking and depalletizing sheet metal packages.

Increase your productivity by more easily separating sheet metal stacks from their carrier pallets. The unpacking table features a movable stamp frame on which the sheet metal package is placed at an ergonomic height. The packaging can now be easily removed, and the wooden pallets fall downwards. With the help of a forklift or crane, the sheet metal package can then be directly transported to the INCOMING GOODS STATION. Experience how easy unpacking can be. Ideal for any sheet format!



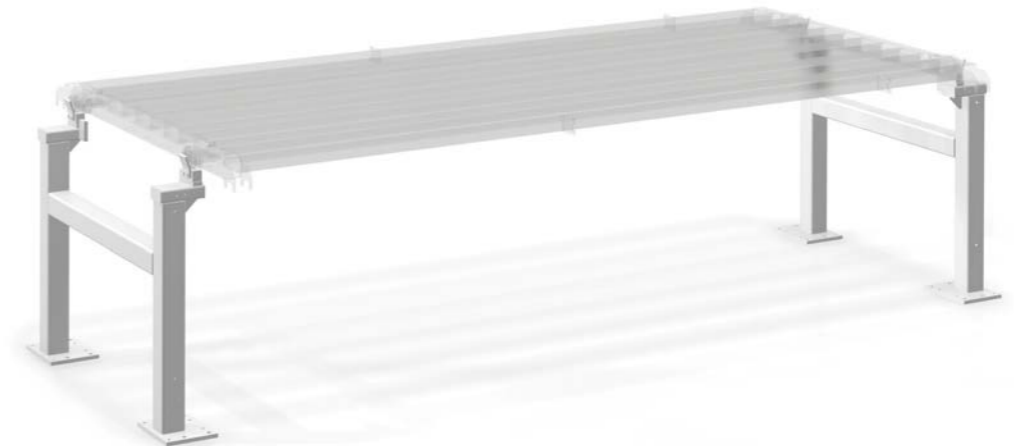
BENEFITS AT A GLANCE →

- Facilitates the entire unpacking process.
- Easy separation of sheet metal packages and wooden pallets.
- Sturdy table with movable stamp frame.
- Optimal height for ergonomic work.
- Prevents damage to sheet metals.
- Available for all common sheet formats.
- Optional also in galvanized version – Ideal for outdoor use.



PEDASTEL

The solution for more efficient workflows



In modern production, efficiency, precision, and flexibility are key. With the PEDASTEL from STOPA, materials such as sheet metal packages or precisely cut parts can be automatically provided exactly where they are needed. The PEDASTEL acts as an interim storage for further processing, for example, for a bending machine.

The PEDASTEL is also a perfect helper in production, as it can be combined with a station wagon, such as a SCISSORS LIFT CART or our innovative WIRELESS CART, provided they have a lifting device. This allows the system pallet to be placed precisely in the desired position.

The height of the PEDASTEL can be variably set between approximately 800 and 1200 mm with a height grid of 40 mm, allowing it to be accessed by a TRANSPORT CART. This enables the operation of either individual or multiple PEDASTEL in a row with just one TRANSPORT CART. This allows for significantly faster cycle times since work can be carried out in parallel at multiple locations.

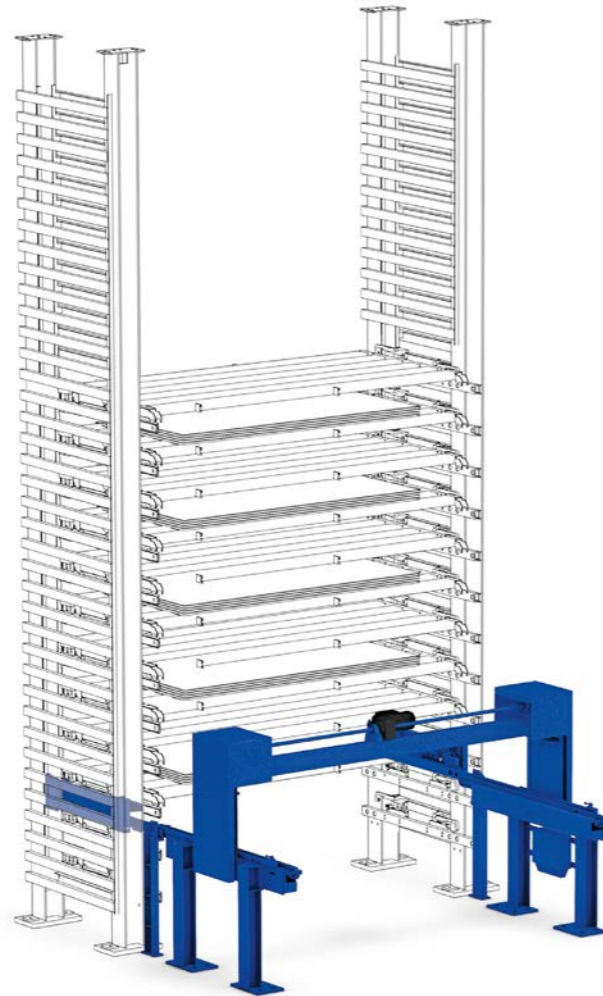


BENEFITS AT A GLANCE →

- Exact positioning – various heights achievable.
- Quick adaptation to workflows.
- Compatible with TRANSPORT CART, SCISSORS LIFT CART, and WIRELESS CART (lifting device required).
- Movable supports – facilitate handling.
- Facilitates parallel work – several PEDASTELS can be positioned one after the other.
- Extended applicability – can also be used outside the automatic processes.

QUICK CHANGER

Perfect synchronization between storage and production



The **RAPID CHANGER** is a simple buffer storage system that enables the quickest possible provision of sheet metal and other goods.

To accelerate material flow, the QUICK CHANGER is positioned as an additional element behind the storage block, allowing direct access to the storage system. It can independently present STOPA SYSTEM PALLETS and EPAL CARRIERS at a separate location. This optimizes processes, decouples loading and unloading cycles from the storage and retrieval unit, and ensures a much smoother and faster material handling.

BENEFITS AT A GLANCE →

- ▮ Faster provisioning ensures constant material supply and shorter cycle times.
- ▮ Decoupling of loading and unloading processes from the storage and retrieval unit.
- ▮ Direct access to the storage system.
- ▮ Pre-storage space and buffer: For smoother and faster material handling.
- ▮ No dependence on other systems.

BUFFER STATION

System pallet provisioning close to machines, independent of the storage and retrieval unit



The **BUFFER STATION** from STOPA eliminates waiting times and enables maximum efficiency. It functions as a stand-alone tower storage with its own storage and retrieval unit (SRU), which is downstream of the storage system.

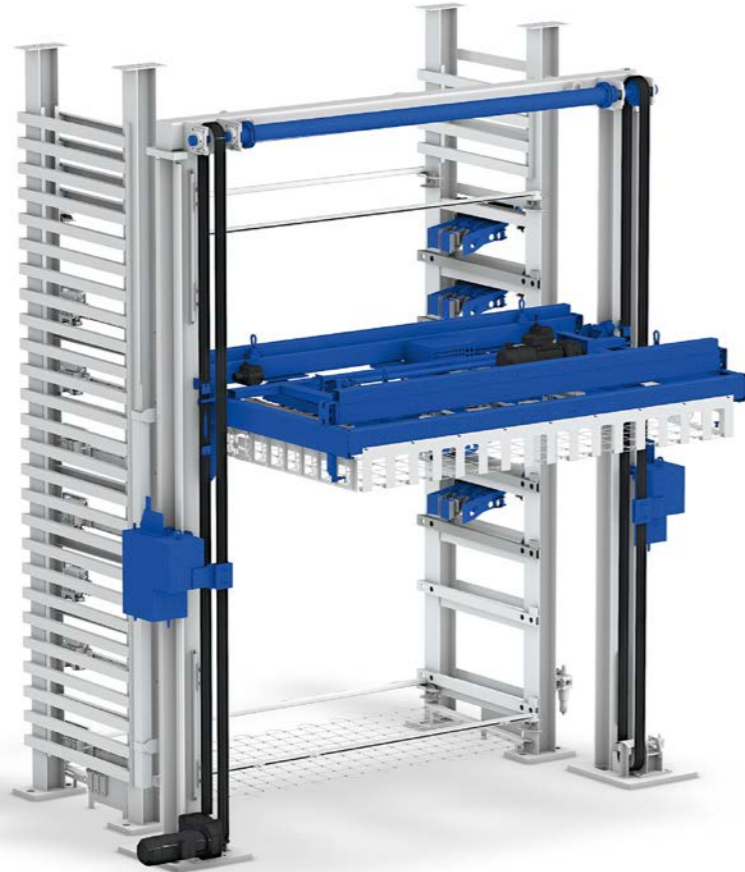
It can access a PEDASTEL directly. This allows for faster picking and provisioning of SYSTEM PALLETS and EPAL CARRIERS, independent of the storage and retrieval unit. The BUFFER STATION operates completely autonomously and can present SYSTEM PALLETS and EPAL CARRIERS on a TRANSPORT CART or SCISSORS LIFT TABLE. With the STOPA BUFFER STATION, multiple pallet changes can also be performed in succession without the need for intervention by the storage system's SRU.

BENEFITS AT A GLANCE →

- ▮ Efficient optimization of loading and unloading processes.
- ▮ Accelerated material flow through short loading and unloading cycles.
- ▮ Automatic picking of SYSTEM PALLETS.
- ▮ Compatible with SCISSORS LIFT CART and TRANSPORT CART.

PICKING TOWER

Fully automated picking of raw sheets for optimized workflows



The PICKING TOWER by STOPA enables fully automated picking of raw sheets – perfectly tailored to your needs. Whether for individual production, for compiling and providing materials for processing machines, or for picking specialized customer orders: the STOPA PICKING TOWER efficiently and order-specifically sorts raw sheet packages.

Integrated spreading magnets for singulation and an automatic double sheet detection ensure maximum precision and prevent the uptake of double sheets. A vacuum crossbeam dynamically picks individual raw sheets from the pre-storage positions and places them on the picking positions. Thanks to its autonomous control and user-friendly interface, the system is easy to handle and can be seamlessly integrated into existing warehouse management systems.

BENEFITS AT A GLANCE →

- ▮ Maximum flexibility in manufacturing through order-specific picking of raw sheets.
- ▮ Time savings through pre-programmable automatic picking orders.
- ▮ Error minimization through integrated spreading magnets and automatic double sheet detection.

Control features

- ▮ Easy operation through intuitive user interface.
- ▮ Worldwide compatibility with Profinet communication standard.
- ▮ The control runs on a dedicated computer.

TECHNICAL DETAILS →

- ▮ Number of picking pallets: 2
- ▮ Maximum loading height: 130 mm
- ▮ Number of raw sheet pallets: 5
- ▮ Maximum loading height: 130 mm
- ▮ Designed for sheet thicknesses from 0.5 – 8 mm
- ▮ Maximum height: 8 m

PARTS TURNING STATION

Fully automatic 180° flipping of plates – for seamless production processes



With the PARTS TURNING STATION from STOPA, you can efficiently optimize your production flow. Automated flipping ensures a smooth transition between production steps – and delivers more precise results.

Whether linear or non-linear processes, the PARTS TURNING STATION ensures a 180° flipping operation of plates if required for the next production step. The station can be directly integrated into the storage system. This means: You not only save time on flipping but also on material handling due to the possibility of automatic storage and retrieval. With the impressive capability to flip up to 3 tons in a single operation, and the quick flipping speed of only 32 seconds, plates can be perfectly prepared for the next production step.

BENEFITS AT A GLANCE →

- ▮ Maximizes productivity through fully automatic flipping of plates.
- ▮ Machine dimensions: 6,500 × 840 mm.
- ▮ Increases product quality through the precise alignment of plates.
- ▮ More efficient material flow due to automatic storage and retrieval.
- ▮ Reliable performance even with heavy loads.
- ▮ Flips up to 3 t.
- ▮ High performance: Flipping duration: approx. 32 s.
- ▮ No connection to processing machines necessary.

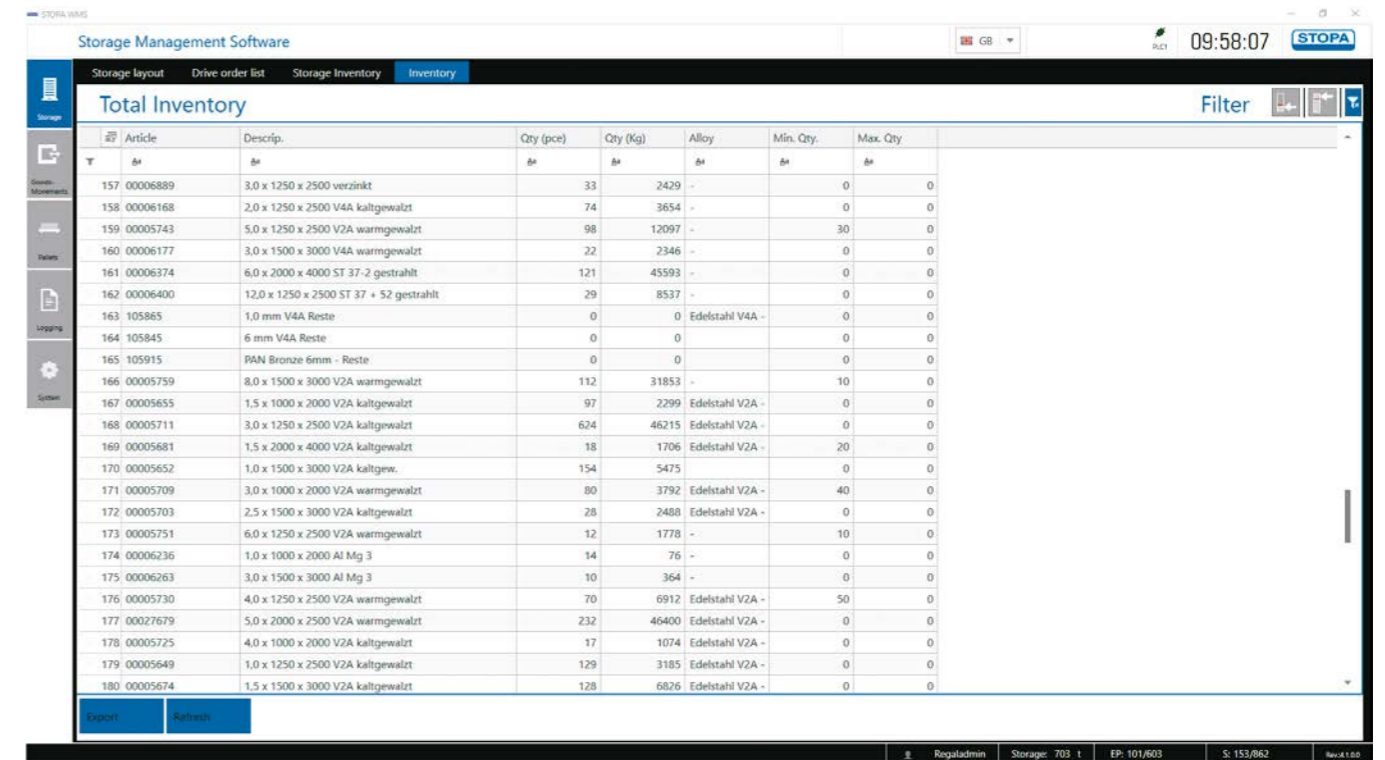
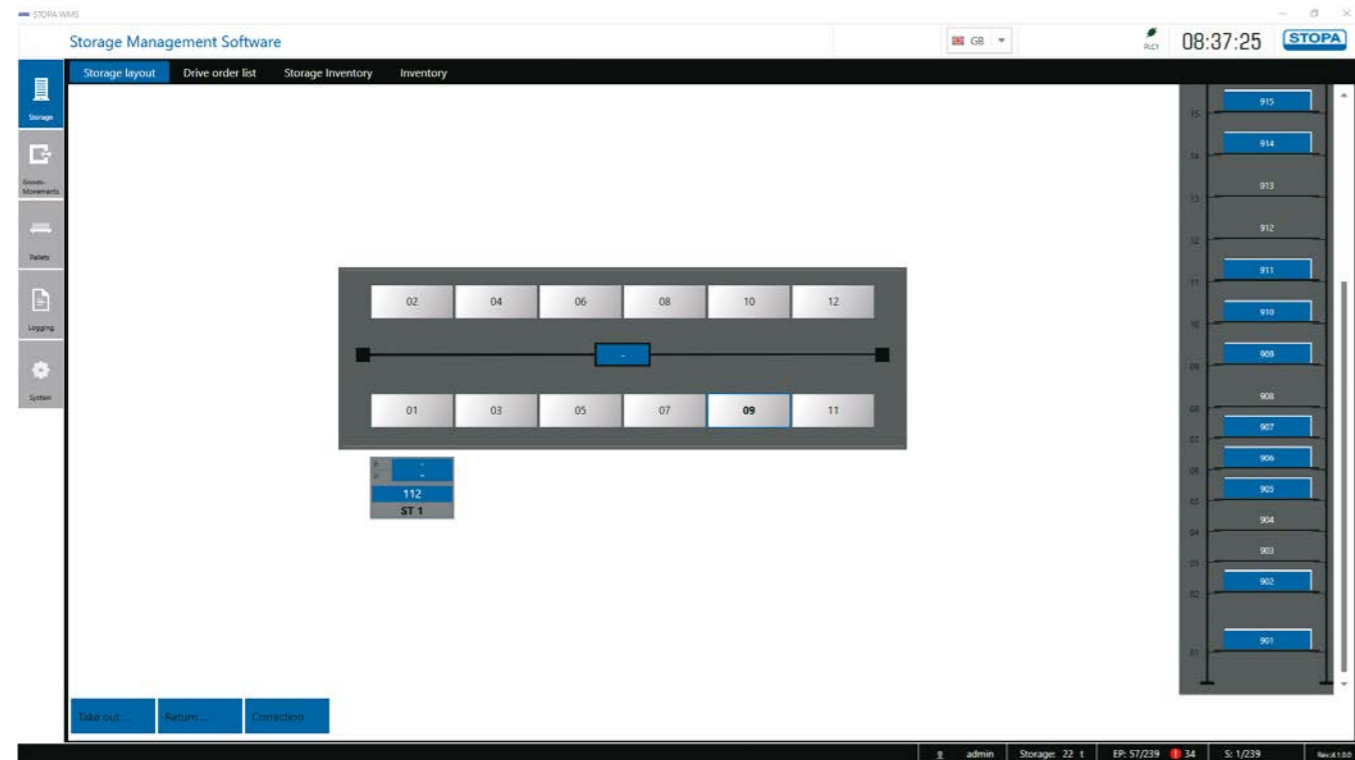
STOPA WMS

Optimizing warehouse processes is a central concern for many companies. With STOPA's WAREHOUSE MANAGEMENT SOFTWARE, you can efficiently master this challenge, as it offers a comprehensive overview of all warehouse activities, ensures precise storage movements, and optimizes material flow. Every feature, from batch management to the integrated weighing facility, has been developed to simplify and improve warehouse operations. Boost your productivity and minimize errors with STOPA's WAREHOUSE MANAGEMENT SOFTWARE.



WAREHOUSE MANAGEMENT SOFTWARE

The smart choice



Maximize your warehouse potential with STOPA's WAREHOUSE MANAGEMENT SOFTWARE. This intuitive software serves as your personal assistant, helping you boost productivity and minimize errors.

Whether you're monitoring your inventory and movements, managing different warehouse zones, or simply aiming to enhance efficiency. Configure your warehouse according to your preferences, and STOPA will handle the rest.

Flexibility redefined with STOPA!

STOPA's modular software design allows for tailored solutions for each of your warehouse requirements.

Choose between the versions "WMS-Essential," "WMS-Tower 4.0," "WMS-Basic 4.0," or "WMS-Extended 4.0" and benefit from functionalities that perfectly match your needs. An added bonus: you can upgrade at any time if necessary.

WMS-Essential

The "Essential" WMS version for STOPA ECO PLUS and STOPA LG-E storage systems provides you with all the functions necessary for operating a single-tower or double-tower warehouse as a fixed-place storage. In fixed-place storage, each pallet is assigned to a fixed storage location. The loading heights are also fixed and are assigned during the warehouse configuration.

WMS-Tower 4.0

"WMS-Tower 4.0" enables efficient management of single or double-tower storage systems by STOPA. The software works with a fixed storage location assignment for each pallet. The loading heights are constant and determined during the warehouse setup.

WMS-Basic 4.0

The "WMS-Basic 4.0" upgrade offers, in addition to the functions of WMS-Essential, the ability to manage additional storage blocks. The storage is carried out as fixed-place storage, meaning the storage locations and loading heights of the pallets are fixed and already structurally determined.

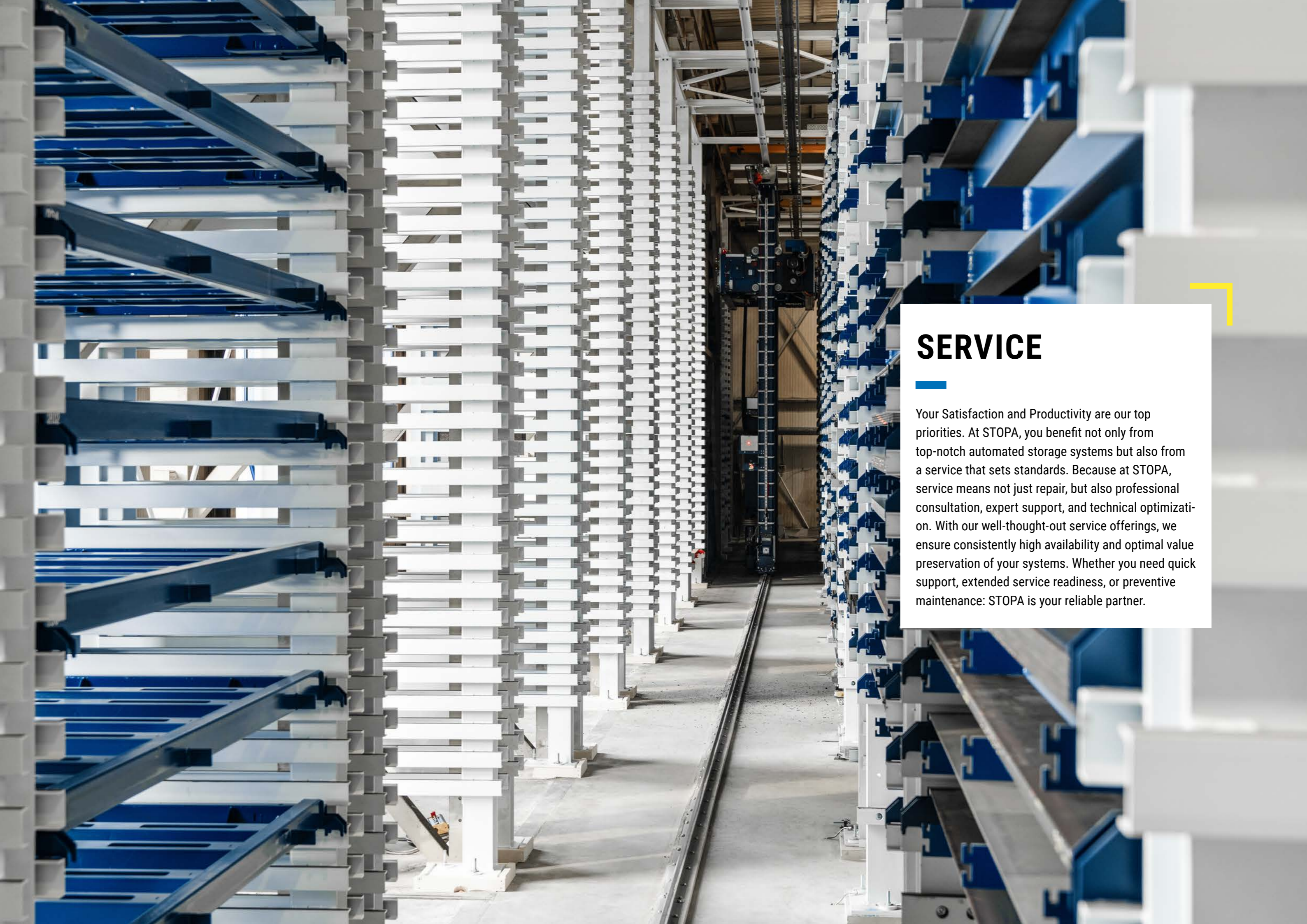
WMS-Dynamic 4.0

The Warehouse Management Software in the "WMS-Dynamic" version offers you the highest upgrade level. It includes all functions necessary for operating and managing one or more large storage systems. Moreover, with the "Dynamic" version, dynamic (chaotic) warehouse management is also possible.

Choose efficiency – with STOPA's Warehouse Management Software!

BENEFITS AT A GLANCE →

- Efficient management of any number of storage places and areas (for sheet metal and long-span storage systems).
- Clear and intuitive user interface.
- Static and/or dynamic storage, configurable for every compartment and pallet.
- Logging of all storage movements and recording in a booking journal.
- Management of multiple warehouse zones possible, e.g., for separating stainless steel from carbon steel.
- Batch-accurate management of inventories and residual stock management.
- Blocking of storage places, articles, or individual batches possible.
- Storage, additional storage, relocation, full withdrawals, and partial withdrawals.
- Automatic piece count determination through integrated weighing facility (optional).
- Interfaces for the integration of production machines.



SERVICE

Your Satisfaction and Productivity are our top priorities. At STOPA, you benefit not only from top-notch automated storage systems but also from a service that sets standards. Because at STOPA, service means not just repair, but also professional consultation, expert support, and technical optimization. With our well-thought-out service offerings, we ensure consistently high availability and optimal value preservation of your systems. Whether you need quick support, extended service readiness, or preventive maintenance: STOPA is your reliable partner.

SERVICE

Maximum availability – minimal downtime

With our exclusive service agreements, we guarantee the highest availability, extended service readiness, and maximum value retention for your storage systems.

Our services are specifically designed to allow you worry-free and efficient warehousing and production. They offer solutions for every requirement profile – from remote diagnostics, through extended service readiness, to regular on-site maintenance. Choose between services without a service agreement and the SERVICE PACKAGES BASIC or CLASSIC. Benefit from our selection of service packages perfectly tailored to your needs, as well as from top-notch consultation and attractive price advantages.

STOPA Services without a Service Agreement

With STOPA, you opt for quality and reliability. Even without a service agreement, we're by your side. Want more? The BASIC package enhances the efficiency of your system and offers exclusive customer benefits. Or experience comprehensive service with the CLASSIC package, including regular on-site maintenance and the annual technical safety inspection.

SERVICE PACKAGE BASIC

Boost the performance of your STOPA storage systems and enjoy unbeatable advantages. Basic is the ideal service package for the STOPA ECO PLUS, STOPA MONO, and STOPA FLEX storage systems. Avoid unexpected failures and play it safe with extended service availability from our team of experts. Quality you can rely on.

Service Overview

- ▮ Remote diagnostics via remote access (Teleservice).
- ▮ Resolution of operational or adjustment errors via online connection to the system by our experts.
- ▮ No matter how often you use our Teleservice, with the annual flat rate of the BASIC agreement, no additional costs will be incurred.
- ▮ Extended service readiness: You can reach our technical customer service also outside the usual office hours by phone: Monday to Friday: 07:00 AM to 08:00 PM, Saturday: 08:00 AM to 02:00 PM* (excluding holidays): +49 7841 704 149
- ▮ Direct dial to the service technician with a separate phone number.
- ▮ Helpdesk response time in case of storage downtime ≤ 1 h.
- ▮ Helpdesk response time in case of malfunction report ≤ 3 h.
- ▮ Priority processing of your concerns.
- ▮ Discounted service hourly rate for repairs after the warranty.

* Central European Time Zone

SERVICE PACKAGE CLASSIC

Working within complex structures where entire production lines are automatically connected with multiple machines? A production disruption could mean enormous losses and could not be compensated for in the short term? Perfect your service with STOPA's CLASSIC package! Beyond the BASIC benefits, we offer targeted preventive maintenance. We identify problems before they occur. Ideal for large storage systems like STOPA COMPACT and STOPA UNIVERSAL. With our expertise, you minimize risks and benefit from our comprehensive service offer, which includes exclusive discounts on spare parts and annual safety inspections.

Service Overview

- Includes all the services of the BASIC package, plus:
- ▮ Preventive maintenance at regular intervals you set, using professionally created checklists.
 - ▮ Checking drives and sensors including all settings
 - ▮ Annual technical safety inspection.
 - ▮ Documentation of manufacturer maintenance.
 - ▮ Closing meeting with the system manager.
 - ▮ Application of a maintenance sticker with information about the exact condition of your system.
 - ▮ 10% special discount on all spare parts after the warranty expires (for orders over €500).



SUPPORT: +49 7841 704 149 – service@stopa.com

SERVICE – SPARE PARTS

Fast, secure, and reliable!

Should your storage system experience a malfunction or component failure, STOPA ensures your system is operational again as quickly as possible. A simple call is enough, and our experts, with their knowledge and fast response times, will set everything in motion for you.

By choosing our CLASSIC service, you also benefit from special advantages such as free consultation and exclusive discounts for orders over €500. Furthermore, our availability guarantee: 10 years of reliable spare parts supply (control components 5 years) guaranteed – and in practice, even longer! Even product changes pose no obstacle for us, as we keep you up to date and offer alternatives. If a spare part is discontinued, we inform you in time and take over the search for another, equivalent spare part. On request, we create a list of specific spare and wear parts for your storage system, offering you security in case of emergencies.

We keep your storage system running!

Our express option ensures that the required parts are with you in record time. If you order the needed spare parts on working days by 3:00 PM, the delivery within Germany (provided the goods are in stock) will be delivered by 9:00 AM the next day. And in an emergency? Our direct couriers are ready to go. Costs and delivery times for direct couriers and international deliveries on request.



SERVICE – SAFETY INSPECTION

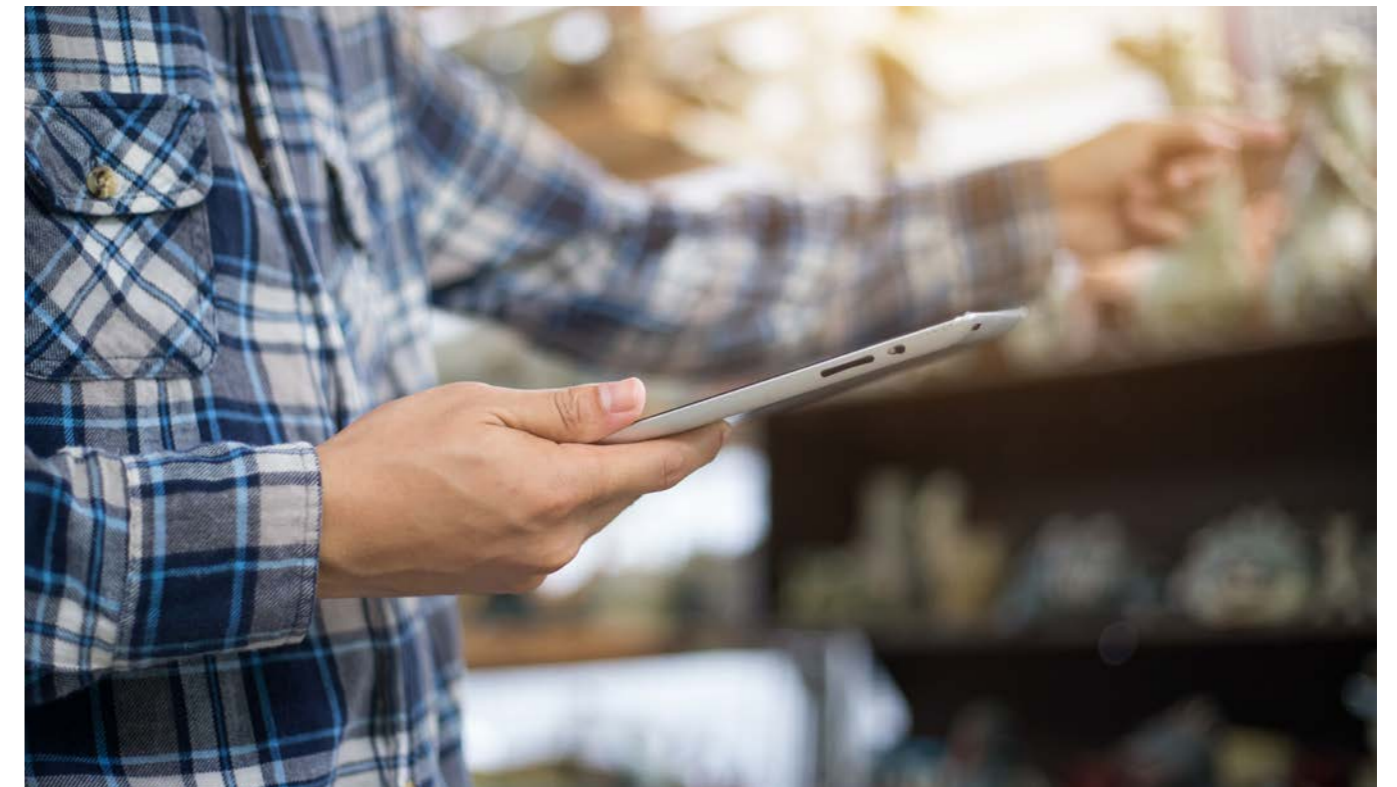
Our expertise is your operator safety

We make sure that your automated storage systems work reliably and safely! We will be happy to carry out the mandatory annual technical safety inspection for you.

Equipment checks, functional checks, and comprehensive documentation – in short: everything you need for the safe operation of your storage systems.

The visual and functional inspection includes the following activities:

- ▮ Inspection of the equipment of the storage systems in accordance with the inspection book.
 - ▮ Checking the condition of relevant components and equipment for damage, wear, corrosion or other changes
 - ▮ Functional and brake check of all motors.
 - ▮ Verification of the completeness of markings and signage.
 - ▮ Documentation of the inspection results and the condition of the system.
 - ▮ Status report for commissioning or continued operation.
 - ▮ Assessment of whether a re-inspection is necessary.
 - ▮ Application of an inspection sticker with a note on the next required inspection date.
 - ▮ Closing meeting with the system's responsible operator.
- Our annual technical safety inspection is your guarantee for operational safety.





RETROFIT

Don't Miss the Connection! The demands on storage technology and production processes grow over time. With our RETROFIT offer, we ensure not only the future-proof availability of your storage systems but also specifically leverage opportunities for efficiency improvement. Whether electrical drives, mechanical components, or modern control techniques: we analyze every facet of your system and develop customized solutions.

RETROFIT

Boost the performance and lifespan of your storage systems!

Why wait months for a new setup when you can renew your storage system in just 2 to 3 weeks? STOPA, one of the leading premium manufacturers of automated storage systems, makes it possible.

Through a RETROFIT, we bring existing storage systems up to the latest technological standard, increasing their efficiency and lifespan. We replace outdated systems and components for which there is no longer any support, such as DC motors, ComCon control systems, operating systems like Windows 7 or older, and much more. We introduce current, technologically advanced components, thereby guaranteeing a quick ROI (Return on Investment).

With timely modernization, you avoid not only unnecessary downtime but the use of the latest drive technologies also offers you significant productivity advantages. Our decades of experience and over 2,500 systems installed worldwide guarantee you quality and reliability. Benefit from increased system and spare part availability, reduce costs, and minimize downtime.

BENEFITS AT A GLANCE →

- ▮ Reliable system availability.
- ▮ Higher spare part availability.
- ▮ Lower maintenance costs.
- ▮ Simplified fault analysis and service support.
- ▮ Reduced downtime.

STOPA's RETROFIT services are as versatile as your challenges. Choose between two different retrofit options:

▮ Partial RETROFIT

▮ Replacement of technical key components

▮ Comprehensive RETROFIT

▮ Complete renewal of your storage system



Option 1

Partial RETROFIT

- ▮ Vulnerability analysis and definition of modernization options.
- ▮ Update of central system components.
- ▮ Reduction of the failure rate by replacing discontinued components with current, innovative technology.
- ▮ Control technology upgrade through the replacement of old control components.
- ▮ Graphical visualization of all project stages.
- ▮ Operating hour counter and diagnostic functions.
- ▮ Logging of messages and travel orders.
- ▮ Precise system control through continuous status messages.
- ▮ Provision of standardized RETROFIT kits.
- ▮ On-site conversion, including commissioning.
- ▮ 12 months warranty on all new parts.
- ▮ 10 years spare part availability (control components 5 years).
- ▮ Detailed documentation.

Option 2

Comprehensive RETROFIT

- ▮ Performance optimization and secure protection against system failures through complete renewal.
- ▮ Replacement of all discontinued components with current, innovative technology.
- ▮ Update of central system components such as control, drive technology, safety technology, bus system, and much more.
- ▮ Graphical visualization of all project stages.
- ▮ Operating hour counter and diagnostic functions.
- ▮ Logging of messages and travel orders.
- ▮ Precise system control through continuous status messages.
- ▮ Provision of standardized RETROFIT kits.
- ▮ On-site conversion, including commissioning.
- ▮ 12 months warranty on all new parts.
- ▮ 10 years spare part availability (control components 5 years).
- ▮ Detailed documentation of the new system design.



STOPA ANLAGENBAU GMBH

Industriestr. 12

D-77855 Achern-Gamshurst

+49 7841 704-0

info@stopa.com

www.stopa.com